

MILTON PARISH COUNCIL

Parish Council Office
Coles Road
Milton
Cambridge
CB24 6BL



Office: Tel: 01223 861447

Email: clerk@miltonvillage.org.uk

Web: www.miltonvillage.org.uk

TO ALL MEMBERS OF THE PARISH COUNCIL

**You are summoned to the next meeting of Milton Parish Council to be held in the Bowls Pavilion on
Monday 4 March 2019 at 7.30pm**

Members of the Public and the Press are cordially invited to attend

Clerk's signature:

Date of issue: 26 February 2019

AGENDA

1. **Apologies for absence:** to receive and approve apologies for absence.
2. **To APPROVE the minutes of the meeting held on Monday 4 February 2019: (Pages 1-5)**
To APPROVE the confidential minutes of the meeting held on Monday 4 February 2019 (Page 6)
3. **Declarations of interest and dispensations:**
 - a) To receive declarations of interest from councillors on items on the agenda;
 - b) To receive written requests for dispensations for disclosable pecuniary interests (if any);
 - c) To grant any requests for dispensation as appropriate.
4. **Public Participation – members of the public are invited to speak.**

At the close of this item members of the public will no longer be permitted to address the council members unless invited to do so by the Chairman
5. **Clerk's/Chairman's report:**

From previous meetings:
CCTV on Jane Coston Bridge – Update: JEC continues to chase this but believes this should be passed onto County Councillor as CCTV was removed without notification and has not been replaced.
A10 Trees – Update: Solicitor is preparing letter and PC has enquired what costs can be claimed. **(Pages 7-8)**
Deeds – Update: Awaiting confirmation from Ashtons Solicitors of deeds being transferred. Still waiting confirmation of Old School Lane land registered and deed number for part of Coles Road rec.
The Sycamores Play Park – awaiting one quote – one quote already received. Both quotes will be discussed with MCC before returning to MPC for decision.
6. **Planning**

To **RECEIVE** the minutes of the meeting on 18 February 2019 **(Pages 9-10)**
Decisions received:
S/0101/19/PA – 1 Goding Way, Milton CB24 6AH – Prior approval for a single storey rear extension.
APPROVED – Prior approval not required.
New:
S/0579/19/LD – 20 The Rowans, Milton, Cambridge CB24 6YU – Certificate of lawful development for a proposed home theatre outbuilding to the rear of the property.
S/0553/19/FL – 93 Cambridge Road, Milton – Proposed change of use from industrial (B2/storage (B8) to private gym for one to one fitness training and physiotherapy.
S/0631/19/FL – 1 Knights Way, Milton, Cambridge CB24 6DE – Part demolition and relocation of the boundary wall to the north of the dwelling/house.
7. **Maintenance (Pages 11-13)**

To **CONSIDER** quote received following our enquiries to upgrade maintenance cover provided by Buchan's to mid/premium level for recreational grounds £3895 + VAT.
To **CONSIDER** tree work on The Sycamore (on public space adjacent to the Post Office) – Crown and reduce height and space by 3-3.5m back to previous pruning points, shape and balance ££185.00 + VAT (to be linked

into other tree work at Queen Anne Lodge).

8. **Capital Project Working Group (Page 14)**
To **RECEIVE** the notes from the meeting of 31 January 2019.
9. **Agreement letter between The Scout Group and Milton Parish Council (Page 15)**
To **CONSIDER** the agreement between the Scout Group, MPC and MCC for lease of land.
10. **Milton Cricket Club request for new garage at The Sycamores rec ground (Page 16)**
To **CONSIDER** request received.
11. **LHI Grant Agreement (Pages 17-19)**
To **CONSIDER** signing the grant offer from Amey for the work carried out under the A14 upgrade funding – Cycle improvements Winship Road, tarmac footpath opposite Tesco, fencing along side slip road. Still awaiting plans for Landbeach Road Bus Stop additional tarmac area.
12. **A10 Footbridge (Pages 20 (a-s) -22)**
To **CONSIDER** collated responses to A10 bridge questionnaire.
Correspondence from CCC
Copy of other relevant documentation: Report from DW.
13. **Request for Defibrillator for North Lodge Pavilion (Pages 23-25)**
To **CONSIDER** quotes received from Cardio Cabinet £1,595 + VAT for Ecopad cabinet and SP1 IPAD defibrillator, Primary Care £1,249 + VAT for cabinet and SAM defibrillator, Seaton £1,528.99 + VAT for cabinet and Zoll AED.
14. **Cambedrail (26-28)**
To **CONSIDER** response to consultation to the Rail Route options.
15. **MCC Report (Page 29)**
16. **County Councillor's Report (Tabled)**
17. **District Councillors' Reports (Pages 30-32) (AB Tabled)**
18. **Bills for Payment and Money Received, Budget figures (Pages 33-34)**
To **AGREE** bills for payment.
19. **Correspondence**
General – copies available on evening
South Cambs District Council – January 2019 Parish bulletin.
Cambridgeshire County Council – IHMC Incident Report January 2019.
20. **Dates of next meetings**
Monday 18 March 2019 – Planning (7pm) Maintenance (7:45pm)
Monday 1 April 2019 – Parish Council
Wednesday 10 April 2019 – Community Care (11:30)

Clerks Office

The full agenda papers are available on the website www.miltonvillage.org.uk and at the Parish Council office.
--

**Minutes of the Meeting of Milton Parish Council held on
Monday 4 February 2019 at 7.30pm in the Bowls Pavilion**

Present: J E Coston (JEC) (Chair), R Farrington (RF), A Horne (AH), D Owen (DO), C Duff, D Wildman, HM Smith (HMS), A Bradnam (AB) (arrived 8.35pm)

In Attendance: S Corder (SC) (Clerk)

1 Apologies for absence

T Leavens (personal)

2 To APPROVE the Minutes of the meeting held on Monday 7 January 2019

AB asked that reasons for the bus stop to be relocated be added to item 11 of the minutes.

JEC PROPOSED to accept the minutes of Monday 7 January 2019 with the amendment – ALL AGREED.

3 Declarations of interest and dispensation

- a) To receive declarations of interest from councillors for items on agenda; None
- b) To receive written requests for dispensations for disclosable pecuniary interests (if any); None
- c) To grant any requests for dispensation as appropriate; None

4 Public Participation – members of the public are invited to speak

No public attended.

5 Clerk's/Chairman's report

From previous meeting:

- CCTV on Jane Coston Bridge – Update: **CCC informed JEC that the CCTV would be reinstated at a cost of £17k to the Parish Council. JEC to investigate further as the CCTV was originally installed by CCC and MPC were asking for them to reinstall.**
- A10 Trees update – Highways England has informed MPC that CCC is responsible for maintaining the trees on the A10 boundary by the allotments. Ashton's Solicitors will write to CCC on behalf of MPC with this information received and to claim back costs MPC paid out during this investigation.
- Capital Projects Working Group – Have now met. Items for discussions are village entrance signs, village map, Christmas lights/tree on pond green, The Rowans area (next to antiques shop).
- AED Unit for North Lodge Pavilion- Clerk sourcing quotes.
- A10 Footbridge – questionnaire has been placed in the Village View.
Bridge assessment - The structures team response is: "They do not carry out any risk assessments on structures. The footbridge is currently fit for purpose with no maintenance issues. Cyclists using the bridge should dismount in accordance with the signage in place".
The bridge maintenance team have confirmed that visual inspection is carried out every 2 years for maintenance defects. They can confirm that currently; the parapet railings are for a pedestrian bridge and have no defects, the surface material is in acceptable condition with no defects at intervention level and the bridge is not gritted as the salt would corrode the structure.

New:

- The Sycamores play area – Clerk and MCC have meet with 3 suppliers to revamp play area, awaiting quotes.

6 Planning

The minutes of the Planning meeting on 21 January 2018 were received.

Decisions Received:

S/4617/18/FL – 4 Townsend Close, Milton, Cambridge CB24 6DN – Single storey side extension between existing property and existing garage. **APPROVED**

New:

S/4589/18/PN – 1-21 Cambridge Science Park, Milton, Cambridge CB4 0FJ – Prior notification for prior approval of proposed demolition of single storey units no's 1-21 Cambridge Science Park. **SUPPORTS**

S/4629/18/FL – 24 Cambridge Science Park, Milton, Cambridge CB4 0FN – Hybrid planning application comprising in detail the demolition of the gym, Trinity Centre and Innovation Centre and the construction of hotel with gym, restaurant, café and business suite; and a building comprising multi-storey car park and three storey commercial floor space (B1 floor space to the first and second floor; flexible accommodation to the ground floor (A1, A2, A3, A4, A5, B1, D1 and/or D2)) along with associated access, infrastructure and landscaping and the change of use of the Trinity Centre to B1 as part of a phased development; in outline the construction of a building up to seven stories to provide B1 floor space, with all matters reserved. **HAS NO RECOMMENDATIONS – COMMENTS:** Milton Parish Council has concerns of the

traffic impact this development will have on an already busy/congested road. Are there currently any height restrictions for new buildings on the Science Park?

S/0187/19/DC – 29 Cambridge Science Park, Milton, Cambridge CB4 0DW – Discharge of condition 11(contamination) pursuant to planning permission S/1405/16/FL. **FOR INFORMATION ONLY**

S/0256/19/NM – 306 Cambridge Science Park, Milton, Cambridge – Non-material amendment to planning permission S/4537/17/FL for 1. Minor adjustment of the location of the external M&E air-con compound. 2. Minor change to design on the north west elevation (between grid co-ordinated N0 and N1) so that the original loading door configuration is retained with replacement new doors, in place of previously proposed alterations to install windows. 3. Change of hardstanding to the air-con compound and bin store from 450 x 450 x 50 paving slabs to tamped finish rc slab. **FOR INFORMATION ONLY**

S/0256/19/NM – Land at Chesterton Sidings, Cowley Road, Cambridge –Discharge of conditions 17 (details of green and brown roofs), 18 (landscape and ecological management plan (LEMP)), 19 (mitigation plan for the provision of a scrub mitigation strip), 26 (scheme of investigation – contamination), 28 (remediation strategy), 29 (surface and foul water drainage) and 33 (construction environmental management plan (CEMP)) pursuant to planning permission S/2372/17/FL. **FOR INFORMATION ONLY**

S/0101/19/PA – 1 Goding Way. Milton, Cambridge CB24 6AH – Prior approval for a single storey rear extension. **NO COMMENTS**

S/0237/19/FL – 20 Sutton Close, Milton, Cambridge CB24 6DU – Two storey rear extension & part garage conversion. **HAS NO RECOMMENDATIONS (AH declared an interest and withdrew from discussion)**

S/0279/19/PA – 41 Fen Road, Milton, Cambridge CB24 6AD – Notification for prior approval for a single storey rear extension. **NO COMMENTS**

Highway England – Noted The A14 Cambridge to Huntingdon Improvement Scheme Consent Order 2016 – Application for a non-material change under Regulation 4 on the Infrastructure Planning Regulations 2011. (To re-classify the A14 to A14(m)).

7 Finance and Administration

The minutes of the meeting Finance meeting of 21 January 2018 were received.

To **CONSIDER** recommendations:

To SET Precept for 2019/20 to £132,000.

Request from MCC for grant of £35,000 (previously £32,000) for 2019/20.

DW Proposed to apply for a precept of £132k and agree the MCC grant of £32k – DO Seconded ALL AGREED.

The budget accounts were tabled. DW to double check Unity bank figure with our RFO as £30 out.

JEC thanked DW for all his work in providing this reports and the work done with the RFO.

8 Internal Auditor

A very pleasing report was received from the Internal Auditor.

Auditor suggested that we consider membership to Institute of Cemetery & Crematorium Management £95 per year. **To be considered at Maintenance.**

9 Maintenance

To **CONSIDER** request to purchase the horse paddock. **JEC Proposed not to sell and to hold onto all MPC assets. ALL AGREED**

10 Community Care

The minutes of the Community Care meeting on 16 January 2019 were received.

To **CONSIDER** recommendations:

To increase Community Care Warden's hours to 30 hours per week (from 25 to 30).

JEC suggested going into Confidential Session to discuss item 10 and 11 - HMS Proposed – AH Seconded

ALL AGREED. (CD declared an interest and left the room at 8.17pm).

Motion to exclude public and press

It is hereby resolved in accordance with Section 1(2) of the Public Bodies (Admission to meeting) Act 1960 that publicity would be prejudicial to the public interest by reason of the sensitive nature of the business to be transacted at Agenda Items 10, To increase Community Care Warden's working hours and Item 11 Grounds Maintenance Contract Quotes.

Meeting to go into confidential session.

(Meeting closed 8.17pm)

11 Grounds Maintenance Contract Quotes

(CD came back into the room at 8:41pm. Still in Confidential Session)

The quotes received for the grass cutting contract for 2019-2022 were discussed. **AB Proposed to accept Buchans quote of £23,994.95 per year – RF Seconded. ALL AGREED. (Meeting opened 8:49pm)**

12 Policies/Risk Assessments

To AGREE updated policies and risk assessments:

Terms of Reference: Planning, Finance & Administration, Community Care, Maintenance, Staffing.

Community Care: Community Care Warden risk assessment, Safeguarding Adults, Aims of the scheme.

Maintenance: Cemetery policy, Cemetery risk assessment, Village Cleaner risk assessment.

MPC: Standing Orders, Milton Parish Council Aims, complaints procedure, statement of intent as to community engagement, use of photographs, disability access, disability discrimination, code of conduct, grant awarding, publication scheme, lone working, fire, office, litter picking community groups.

AB and DW suggested some minor grammar corrections to the policies. **JEC Proposed that Council adopt all the policies (with minor grammar corrections as pointed out by AB & DW) apart from the Cemetery policy and litter picking risk assessment which should be considered further by the Maintenance Committee. HMS Proposed – AH Seconded ALL AGREED.**

13 Milton Youth Club

The September to December termly report was received. RF commented that there has been a decline in numbers of attendees and some sessions were cancelled due to staff sickness. Clerk to confirm if MPC are charged for non-sessions.

14 Zebra Crossing at Tesco

To CONSIDER position for improved crossing from Jane Coston Bridge to Tesco as CCC have confirmed that the present crossing point is not suitable for a zebra crossing– Quote received from CCC Highways: Zebra Crossing in different location £17,500 - £31,000. Pedestrian refuge island £5,500 - £10,000.

As advised from CCC a zebra crossing cannot be placed in the suggested area (currently where the refuge island is) due to the proximity of the roundabout. MPC feels that at present no further consideration is required.

15 Milton Community Centre Report February 2019

Maintenance/Improvements: The annual gas maintenance checks have been carried out at the Community Centre, the Annexe and North Lodge Pavilion. The showers in the Sycamores Pavilion have been professionally cleaned

Bookings: We have a new Thursday morning Art Class, arranged by IVC Adult Education. All our regular bookings continue as normal (apart from Thursday French – see below).

North Lodge: The Thursday morning French Class, booked by IVC Adult Education, has been cancelled due to lack of numbers. However, the Wednesday morning French class continues as normal.

Vandalism: Late evening, Friday 25th January, a youth drove onto Coles Road rec and caused damage to the football pitches. The police were alerted by a fisherman at the Country Park and although the youth had left the scene by the time the police arrived, they managed to locate him in Tesco car park. They plan to prosecute him under the Road Traffic Act and due to previous driving conditions, he will probably lose his licence and will receive a fine. Access to the rec was obtained through a gap next to the new play area fence, so we will shortly install a new bollard to stop this happening again.

16 County Councillors Report – February 2019 Anna Bradnam (Full report on website)

Covering the following:

Council Tax: The Council will be setting its budget on Wednesday 6 February. The Business Plan currently assumes that Council Tax will increase by 1.99% for the financial year 2019-20 but the Council has the option to raise Council Tax by a further 1% which will raise an additional £2.728 million.

Highways: In October 2018, the Chancellor announced in the Budget the Government was allocating a further £420 million of new money for local highways maintenance. From this new funding Cambridgeshire County Council has been allocated £6.6 million to spend by the end of March 2019. The Local Highway Officer has brought forward the following works from the existing programme: Milton Knights Way and Walking Way. AB asked that in addition to the footways, the roadway in the north section of Knights Way should also be resurfaced. **Update: Benet Close footpath has also been added to the list. 15 jobs have already been completed in Milton including potholes and bollards.**

Children's Mental Health:

The Cambridgeshire and Peterborough Combined Authority Local Transport Plan: is being developed. It will cover the period up to 2036 and beyond.

Trading Standards: work across Cambridgeshire and Peterborough. Constituents should contact the **Citizens Advice Consumer Service for all consumer advice matters on 0345 4040506**. They share intelligence with Trading Standards as appropriate, who will monitor and intervene as necessary.

Libraries for the Future The Council has engaged a charity called CIVIC to investigate how we can transform libraries into hubs for community activities and centres for public service.

The Corporate Parenting Sub-Committee: will be considering priorities for the Virtual School, the performance of children who are looked after and support for those leaving care, including "The Local Offer".

The Cambridgeshire Health and Wellbeing Board: will be reviewing the results of the campaign to end loneliness, the Adults Positive Challenge and the suicide prevention programme, Living Well across Cambs and Peterborough.

17 District Councilors' Report – February 2019 (Full reports on website)

Covering the following: Anna Bradnam

Waterbeach New Town Community Forum: At the last Forum on 9 Jan there were presentations on transport including the relocated railway, access via Cody Road and the A10, delivery of materials by rail, a review of the Supplementary Planning Document, an overview of education provision and a response to the SPD from Waterbeach Parish Council. There were questions on cycling routes, crossings over the A10 and Denny End Road and Car Dyke Road, bus routes, shuttle services and P&R sites. The next Forum will be on 10 April 2019. On 22 Jan the Scrutiny and Overview Committee approved the Supplementary Planning Document with the modifications made following the public consultation. The SPD will be considered by South Cambs District Council Cabinet on 6 February.

Police and Crime Commissioner Panel Meeting: The current challenge of reducing resources combined with the difficulties of identifying hidden crimes (sexual abuse and exploitation), the need to be alerted to terrorism and the pressure on staff as a result of the local Policing Review 2018 were explained.

The Farmland Museum: The Grants Advisory Committee recommended SCDC continue to fund the Museum with £8,500 per annum for three years.

Covering the following: Hazel Smith

Northstowe – meeting with Homes England: Terry Fuller, Executive Director for the East and South East of England region of the HCA, met with the South Cambs Cabinet to outline their plans for Northstowe Phase 2.

New customer portal mysouthcambs.scambs.gov.uk

This new way to interact with the council has been launched for some services in January. The OneVu portal is built around the idea that residents will log in and any ongoing issues between them and the council can be tracked. Only a few services are on the portal just now, and the IT department are encouraging people to sign up and use the portal (as pioneers or beta-testers), and report any problems so they can fix any bugs. It has a useful link to the County's report-a-highways-fault page and to the South Cambs bin collections, as well as benefits and council tax. To register use the following link <http://mysouthcambs.scambs.gov.uk>

East-West Rail <https://eastwestrail.co.uk/latest-news>: The consultation on the route to be chosen between Bedford and Cambridge will start on 28th January and runs until 11th March. You may remember the recent meeting about the CamBedRailRoad proposal to bring the line in to Cambridge via a route across the fields south of Landbeach and joining the Kings Lynn line's alignment north of Milton to run into Cambridge North Station. This idea was again tested by their engineers and rejected, as it is more expensive than an approach from the south where for a greater length the land adjacent to the railway, they say, is wide enough to add more tracks. They expect to be able to start work on this Bedford to Cambridge section of the railway in the mid-2020's, and this would be unusually fast progress for a scheme of its size.

Waterbeach New Town Planning meetings

The Supplementary Planning Document (SPD) was considered by the Scrutiny and Overview Committee on 22 January and will come to Cabinet on 6 February. Counsel's advice to SCDC on the question of the ransom payments between the two developers has not helped resolve the "ransom" situation – the council cannot use the SPD to make them cooperate and it would be better for the development and for community cohesion if the two master developer companies would work more closely together. There are meetings to discuss viability on Feb 5th and 7th.

Budget: South Cambs has set a balanced budget that will put a little money back into reserves as we know the government is planning to further reduce funding for district councils.

Covering the following: Judith Rippeth

Amey liaison meeting: HMS and JR attended a meeting on 17th January with other local district and parish councillors in attendance. Amongst the issues discussed were the level of residents' complaints regarding odours from the plant or elsewhere. A number of us commented on 'reporting fatigue' due to the length of time it can take to register a complaint with sometimes calls taking up to twenty minutes. An alternative online system using email was suggested to run alongside a phone system which would help to build a more comprehensive picture of where and when odours are most pungent. Amey have withdrawn their permit application to the Environment Agency for an EfW plant. They have until mid March to decide whether to submit an appeal. Before the next meeting, scheduled for 18th July, Amey are planning to appoint an independent chair. We were also informed that Amey will shortly be sending out a survey to members of the group, residents and parish council clerks to understand the purpose of the group going forward.

Cambridge Northern Fringe – Area Action Plan:

JR attended Cabinet on 9th January and amongst the issues discussed was the future of this key strategic site. The consultation on issues and options 2 will start on 4th February and will run for six weeks. The Council is unlikely to hear back on the success, or otherwise, of its Housing Infrastructure Bid until March.

Urban and Civic: A number of briefings are being held for planning committee members prior to the extraordinary meeting on 28th February when the U&C application will be considered. The first of these briefings took place on 16th January where we were taken through the complexities of deciding a large application. This was followed up by a briefing on 18th January looking at drainage and flood risk plus the use of renewable and non-renewable sources of energy for the site. U&C's plans for electrification were extremely interesting and should assist in reaching the Council's ambitious zero carbon target for 2050.

- 17 Bills for Payment and Money Received.**
To **CONFIRM** and **AGREE** bills for payment.
JEC Proposed to pay all bills. DO Proposed – AH Seconded **ALL AGREED**
- 18 Correspondence**
General – copies available on evening
Cambridgeshire County Council – IHMC Incident Report December 2018
- 19 Dates of next meetings**
Monday 18 February 2019 – Planning
Monday 4 March 2019 – Milton Parish Council

Meeting closed at 9:55pm Signed: Date:

**Minutes of the Planning Committee Meeting of Milton Parish Council held on Monday 18 February 2019
at 7.30pm in the Bowls Pavilion**

Present: R J Farrington (Chair) (RJF), D Owen (DO), T Leavens (TL), HM Smith (HMS)

In attendance: S Corder (Clerk)

Members of the public: None

1. Accept Apologies for absence:

J Coston (Personal)

2. Approve the minutes of the Planning Meeting held on 21 January 2019:

RF Proposed the Minutes of 21 January 2019 be signed as a true record. **ALL AGREED.**

3. Declarations of interest and dispensations:

None.

4. Decisions Received:

S/3257/18/FL – Meadow Farm, Ely Road, Milton, Cambridge CB25 9NN – Change of use of domestic annexe to holiday accommodation. **APPROVED.**

S/4810/8/FL – 38 North Lodge Park, Milton, Cambridge CB24 6UB – Loft conversion with pitched roof side dormer window and roof windows. **APPROVED.**

5. New:

S/0109/18/CW – Milton Landfill Site, Butt Lane, Milton, Cambridge CB24 6DQ – Variation of condition 1 of planning permission S/00511/08/CW to extend the time for reinstatement of the site to a condition suitable for the resumption of agricultural use to 31 December 2026. **MPC Views: OBJECT. 1. No justification has been provided for this extension. 2. Will the landfill continue to be in use past 2020?**

S/0372/19/DC – Land adjacent to Cambridge North Station, Milton, Avenue, Cambridge CB4 0WZ – Discharge of conditions 20 (noise assessment) and 32 (WMMS) of planning consent S/2372/17/L for erection of 217 bed hotel with ancillary ground floor retail (use class A1/A3) floorspace, associated landscaping and public realm improvements and a 20-space car park. **FOR INFORMATION ONLY.**

S/0296/19/DC – Transport Plaza, Cambridge Science Park, Cambridge CB4 0FJ – Discharge of condition 12 (a scheme detailing the widening of the footway to allow for shared use walking and cycling and a scheme showing the layout and design of the plaza area to the East of the site, including vehicle circulation, pedestrian routes, kiosks, shelters, bollards and other ancillary structures) pursuant to planning permission S/3590/17/VC. **FOR INFORMATION ONLY.**

S/0295/19/DC – 22 Cambridge Science Park, Milton, Cambridge CB4 0FJ – Discharge of condition (electric vehicle charging), 15 (scheme for secure and covered cycle parking) and 16 (scheme for screened refuse storage) pursuant to planning permission S/3590/17/VC. **FOR INFORMATION ONLY.**

S/0355/19/FL – 41 Fen Road, Milton, Cambridge CB24 6AD – Demolition of existing garage and erection of a single storey rear extension. **HAS NO RECOMMENDATION**

S/0327/19/FL – 29 Cambridge Science Park, Milton, Cambridge CB4 0DW – Erection of new glazed canopy, glazed links (part retrospective), part demolition and minor refurbishment works. **HAS NO RECOMMENDATION**

S/0385/19/TC Tree Work: Queen Anne Lodge, 6 Fen Road, Milton, Cambridge – Robinia: Crown and reduce height and spread by 3-3.5m back to previous pruning points, shape and balance. Sycamore: Crown and reduce height and spread by 2.5m back to previous pruning points, shape and balance. Sycamore: (on public space adjacent to post office) crown and reduce height and space by 3-3.5m back to previous pruning points, shape and balance. **MPC Comments: No objection to the tree work on planning grounds but no work to be done to the Sycamore on MPC land until agreed by the Maintenance Committee.**

S/0626/19/DC – Existing Black House demolished, new build The Black House, Chesterton Fen Road, Milton, CB4 1UN – Discharge of conditions 3 (arboricultural method statement), 4 (demolition of structures), 7 (verification report), 8 (environmental desk study) and 10 (surface water) or planning consent for demolition of existing dwellings and erection of two new dwellings. **FOR INFORMATION ONLY.**

S/0562/19/DC – 22 Cambridge Science Park, Milton, Cambridge CB4 0FJ – Discharge of condition 17 (car park management plan) pursuant to planning permission S/3590/17/VC. **FOR INFORMATION ONLY.**

6. **Date of next meeting**
Monday 18 March at 7:00pm.

Meeting closed 8:10pm

Signed: Date:

DRAFT

PARISH COUNCIL NOTIFICATION OF TREE WORKS

TREE PRESERVATION ORDER (TPO) OR CONSERVATION AREA



South
Cambridgeshire
District Council

To the Clerk of the Parish Council Meeting: Sarah Corder, Milton Parish Council Clerk	Notification sent: 01-Feb-2019
--	--

Application Ref: S/0385/19/TC	TPO No. (if applicable):
Applicant: John Holder 6, Fen Road Milton Cambridge CB24 6AD	Agent: Chris Cole, Eastern Tree Surgery Eastern Tree Surgery Regent Farm 7 Heath Road Swaffham Prior Cambridge CB25 0LA

Tree(s) Location:

Queen Anne Lodge, 6, Fen Road, Milton, Cambridge, CB24 6AD

Proposal:

Robinia - Crown reduce height and spread by 3-3.5m back to previous pruning points, shape and balance. Sycamore - Crown reduce height and spread by 2.5m back to previous pruning points, shape and balance. Sycamore (on public space adjacent to post office) - Crown reduce height and space by 3-3.5m back to previous pruning points, shape and balance. *MPC tree to be removed from works*

The parish does not have to respond to this notification but if you do wish to make comments please return your observations via the website <http://plan.scambs.gov.uk> or by email to planning.trees@scambs.gov.uk within 21 days from the date of this letter. Please do not post them to us. The Council are required to determine the application/notification without delay. Please read the information overleaf to help form your comments.

Please use the link below to view all copies of documents, plans and forms in respect of the above application. As the website updates overnight, these will be available to view the following day.

<http://plan.scambs.gov.uk>

If you need further guidance with the regulations please visit: www.gov.uk/guidance/tree-preservation-orders-and-trees-in-conservation-areas.

Be aware that your comments, including your name and address will be put on the file and will be open to public inspection at our offices. A redacted version may be published online.

* Helpful information from Tree Officer overleaf *

Capital Projects Working Group – 31 January 2019 at 11:30am

Present: J Coston (JC), S Corder (SC) Clerk, D Wildman (DW), R Farrington (RF)
Apologies: T Leavens

This meeting was called to discuss future arts projects on Pond Green and the area at the front of The Rowans entrance (by the Antiques shop) including Christmas festivities.

RF: If MPC were to erect Christmas lights on the tree on Pond Green then we would need to seek approval from CCC to have an electricity source (from a street light) to a power point near the Village sign. This would enable us to, if considered, to light up the Village sign.

Rob Chapman has also offered to donate to MPC a Christmas tree which could also go on Pond Green (with CCC approval).

Clerk to ask CCC for permission for “an electricity supply for festive decorations and lighting up of the Village sign” and the possibility of erecting a Christmas tree.

RF also mentioned that the village sign is missing from the Landbeach Road entrance. It was never returned when the A10 Milton junction was upgraded. MPC could also look at the entrance signs on Ely Road and A14 slip road by Tesco. **Would need CCC approval for erection of new signs.**

JEC: MPC own the area at The Rowans entrance (by the Antiques shop) and could be a good location for Christmas festivities. The area would need a tidy up and the trees trimming. Suggestion of installing benches. Area could be called after the Queen. (“Queen Elizabeth Green”).

DW Village Map – needs to be looked at and a new one produced. Location of current map is sufficient as near a layby for the shops for people parking up to look at the map. DW asked when does the Arts budget have to be spent by?

RF Scot Building Agreement – An email was sent to the Clerk from the Scout Group Treasurer listing all the points that have been previously agreed in the past. Clerk suggested that the email received be slightly amended and to become a new agreement between MPC, MSG and MCC. MPC to agree to the wording of the agreement. **Clerk to type up new agreement for MPC agreement.**

Clerk to arrange for Capital Projects group to meet on site on Saturday 9 February.

MILTON SCOUT GROUP BUILDING COLES ROAD MILTON CB24 6BL

AGREEMENT

This memorandum of agreement seeks to establish an understanding of the presence of the scout building at this location. Parties to this agreement are Milton Parish Council (MPC), Milton Community Centre & Recreation Grounds (MCC) and 50th Cambridge (Milton & Landbeach) Scout Group. (MSG)

- Planning permission was originally granted for the construction of a brick built store for the MSG in July 1988.
- The building was built at the expense of MSG and the building only is owned by the MSG.
- According to the notes / minutes from the time, the intention was that a lease would be granted to MSG in connection with the land occupied by their building. This was subsequently overlooked and the lease was never completed.
- In February 1990, at a meeting between MPC and MCC, it was agreed that the MSG would be charged £1.00 per annum ground rent. This is paid regularly.
- The freehold land that the building sits on is in the ownership of MPC and was leased to MCC in 1998.
- In 1998 when a lease was agreed between MPC and MCC the Scout building was specifically excluded from the buildings included in the lease
- In December 2005 it was agreed between MPC, MCC, Milton Outdoor Bowls Club and the MSG that the new Parish Council office would be built between the Scout building and the Bowls Pavilion. MPC agrees to make good any damage now or in the future to the Scout Building caused by the building of the Parish Council Office.
- In July 2017 MSG granted permission to MPC to install a CCTV camera on the front of the scout building. This camera remains the property of MPC.
- MPC agree to MSG continuing to occupy the land that the Scout building stands on for a term ending on the same date as the MCC lease – 24th August 2097.

As Agreed by: MPC on
 MSG on
 MCC on

MPC. Signed..... Name..... Position.....

MSG. Signed..... Name..... Position.....

MCC. Signed..... Name..... Position.....

No	Postcode initials or road	Comment
N	CB24 6DP	<p>As a cyclist, both for commuting to work on the Science Park and leisure/health/fitness at weekends, I have used that A10 bridge to cycle over many hundreds (maybe thousands) of times in the 12+ years I've been living in Milton. I have a 22+ mile circular route that takes me from Milton out through the villages of Landbeach, Cottenham, Willingham, Over, Swavesey, Longstanton, Oakington, Histon and Impington. Whichever way around I do that route I either have to start or end it by crossing that A10 bridge whilst the only other way across the A10 is from Humphries Way over to the Landbeach Road towards Landbeach. The latter crossing can still be quite a nuisance when there is heavy traffic, even with recent improvements for cyclists, as people do not slow down to let walkers or cyclists cross. On one occasion I had to wait over 10 minutes whilst stuck in that middle island due to heavy traffic heading north or exiting from Humphries way behind me, in either case no one would let me over the road...I'd estimate that around 90% of the time I cycle over that A10 bridge there is no one else on it. When there is its often another cyclist going the other way (and we can cycle past each other without issue), rarely walkers. When I have seen some woman with a pram I often just stop on the bridge and let them past (woman can give you the evil eye when you don't). Part of my weekend cycling routine is to improve my times & performance so having to get off my bike to walk painfully slowly across that A10 bridge would be extremely annoying and mess up my performance tracking. It's also quite difficult/cumbersome to walk in cycling shoes (those with SPD type cleats) as any cycling enthusiast will confirm to you, and this also puts unnecessary wear on the SPD fittings. To be honest, when I read the article my initial reaction was anger. This of things sounds to me like busy bodies with nothing better to do putting their oar in to make other people's lives difficult for no other reason than to exercise their own little realm of power over others. If you were to put this restriction in place I would probably be pushed towards trying to avoid that A10 bridge completely and cycle out onto the A10 from that Butt Lane exit to head north on the A10 and then try to move/cycle over to the right to take the road junction into Humphries Way. I'd be doing being fully aware how dangerous that would be and that really I'd rather not have to do that at all. It is worth mentioning that when commuting in the mornings I have had 3 incidents in January this year alone where drivers coming from within Milton, out through the Landbeach Road onto Humphries Way trying to get out onto the A10 have nearly (and seemingly deliberately) knocked me off my bike as I was trying to turn right from Humphries Way east onto that Landbeach Road. I'd already be at that junction, indicating and already turning and the idiots speeding up to that junction exit would just ram their way out in front of me. I have reported this to the Histon police station via email but the response I got (after several weeks wait) said there was nothing they could do and that they suggested I buy a cycle helmet camera. A camera is not going to help me at all when I go under the front wheels of a car or over its bonnet...So no, I don't think you should put this restriction in place and unnecessarily make cyclists lives more difficult or even put their lives at risk. If certain people feel that bridge is inadequate for walkers in some way then put in plans to build a larger more useful bridge.</p>

N	Camcycle	Camcycle is a volunteer-led charity with over 1,300 members that works for more, better and safer cycling and walking for all ages and abilities in the Cambridge region. We object to any suggestion that the bridge over the A10 be blocked for people cycling. To do so would be a violation of the duties of the parish council under the Equality Act not to discriminate against people who use cycles as a mobility aid. Furthermore many parents with children in cargo cycle and trailers would find it very difficult if not impossible to navigate the relatively steep bridge while pushing their heavy cycle. That would discourage families from cycling to school, exactly the wrong message to send. We find that advisory signs are often misunderstood, and lead to unnecessary aggravation between people who mistakenly believe that dismounting is compulsory and people who know that it is not. A similar 'cyclists dismount' advisory sign on Green Dragon bridge in Chesterton has been removed precisely because of this type of confusion. Therefore we recommend removing the 'cyclists dismount' sign altogether, and also removing the obstructive barrier at the Milton end of the bridge that is difficult to pass for people with trailers or tandem cycles. Our members have a number of ideas for tremendous improvement to this junction and crossing We would be happy to present these to any councillors interested in visionary active and public transport in Milton. Please get in touch.
N	CB24 6ZG	However, I would prefer if the signage were improved. Neither the 'Cyclists Dismount' nor 'No Cycling' signs indicate *why* they are there. If we can update signage please could we have a sign explaining that the railings are too low for safe cycling, and asking cyclists to be courteous toward pedestrians. And then of course, actually make the bridge safe, but I'm guessing that is out of scope.
N	Hal End	
N	CB24 6AQ	
N	CB24 6DF	
N	CB24 6ZG	The existing signage is sufficient.
N	NJ - Milton Res	
N	Cb24 6de	I vote to keep the sign the same..do not make it compulsory for cyclists to dismount.
	MAJ - Milton Res	Please keep the cycle sign as advisory only on the A10 bridge. I can't see any benefit to making it into a compulsory sign.
N	Orchard P	I am a resident of Orchard Park, and the Milton Tesco is our nearest large supermarket, and we are users of Milton country park. I have twin babies and use a cargo bike to transport them and shopping. My bike is very heavy and I use electric assist on it to go over bridges such as the A10. It would be very much harder for me to dismount and push the bike up the slope than to cycle. Some people have disabilities which make cycling much easier than walking and it would restrict their use of the bridge if dismounting is mandatory. My experience is that these advisory signs are misunderstood, and lead to unnecessary aggravation between people who think it is compulsory and people cycling. A similar sign on Green Dragon bridge in Chesterton has been removed because of this, with no ill effect.
N	CB24 6BL	
N	CB24 6AW	
N	CB24 6UB	
N	CB24 6DG	

N	CB24 6DG	
N	CB24 6BG	
N	CB24 6DA	Hello. I think it should remain advisory for cyclists to dismount. Usually it is possible to cycle across without inconveniencing walkers (most of the time there are none). However, cyclists must be prepared to show courtesy and respect and if necessary dismount to give priority to walkers - as I'm sure most of us do. Perhaps it might be possible to add a 'courtesy and respect note' to the advisory sign?
N	CB24 6YR	The current advisory signs are misleading. Can I suggest you replace them with signs such as those on the guided busway reminding both cyclists and pedestrians to be considerate and take care around each other.
N	CB24. 6DG	
N	DC	Compare to the Green Dragon bridge, where there is no longer a sign requiring cyclists to dismount. The bridge is part of a recognised cycling route: requiring people to dismount, as opposed to just be courteous to other users, is unhelpful to encouraging people to cycle. Moreover, if a sign making dismounting mandatory is erected, it is highly likely that many will ignore it, rendering the whole exercise a waste of money.
N	The Oaks	
N	JG Milton	No, I don't believe it is enforceable and won't change existing behaviours. It would be a futile use of funds.
N	CB24 6YR	
N	TC	No, I don't think dismounting should be compulsory, but I would support a sign warning of
N	CT Hall End	Further comments on separate sheet ✖
N	JP Butt Lane	I do not think the current signage on the A10 bridge needs changing and believe the cyclists dismount signs should stay as they are. I also feel that if the parish council want to canvass opinion on this they should publicise this through more routes than the village view. I know many people from outside the village who cycle over the bridge and because this is only in the Milton Village View they are being excluded. This is wrong. Also, if cycling is to be banned, I'd like to know how many accidents have been recorded on the bridge, and of these how many have been a result of poor cycling behaviour. I've read the minutes of January's meeting where the A10 bridge is discussed. I note that it is to be discussed again in the March meeting, I'd like to ask if alongside discussions of the change of signage being looked at, the parish council could also look at lobbying for improving the bridge and also the option to get rid of the bridge completely and open Butt Lane for pedestrian and cycle traffic with changes to the A10 lights being looked at. I know MPC and others have lobbied for improvements in the past but with all the new developments northwards up the A10 and the increasing use of the P&R could there not be some money from developers put aside for positive changes (making the bridge better) instead of negative ones (banning cycling)? I'd also appreciate reassurance that any changes be discussed fully with all users, not just those who happen to live in Milton before any changes take place.
N	MC	The advisory sign for cyclists is sufficient.
N	CB246ZL (FG)	

N	CB24 6DG	No, it should not be compulsory for cyclists to dismount. The current signage is sufficient, and in line with the signage across all similar span bridges in and around Cambridge. I strongly object to the way the question is phrased, which is exceptionally leading. The council should be doing everything it can to promote sustainability, which includes maximising the use of cycling and improving the accessibility of facilities like the P&R. This proposal is a step backwards, put forward by a few people with their own narrow and short sighted agendas at heart. The question should have included the alternative option of improving the bridge to ensure the parapets are safer for cyclists, to improve safety and accessibility for all. Shame on the Parish Council. I fully expect my comments will be brushed aside as the views of a "cycling activist"... though I'd remind the council I was asked represent the Parish council at the Chisholm Trail LLF meetings precisely because I cycle to work every day and run a 50-strong Cambridge company where around half of employees complete at least part of their commute by bike.
N	CB24 6YS	
N	CB246ZL (LG)	
N	CB24 6ZL (LB)	My husband and I vote that it should not be made compulsory that cyclists have to dismount to cross the A10 bridge.
N	CB24 6XL (MR B)	My husband and I vote that it should not be made compulsory that cyclists have to dismount to cross the A10 bridge.
N	Butt Lane	I write in response to your article in the Milton Village magazine regarding the A10 foot bridge. I would like to express my opinion that there is no need to prohibit cycling across this bridge, and that the current advisory signs are both clear and adequate. I regularly use the bridge both by cycle and on foot. I would also like to comment on the article itself. It is not made clear why the change is being considered. To my mind there are two possible reasons: That the bridge is unsafe for cyclists to cross; or that cyclists crossing the bridge pose a significant risk to pedestrians. Your article does not suggest or give any justification for either. The issue is that the responses you have solicited (including my own) will now necessarily be based primarily on opinion, emotion, and a narrow personal experience dataset, and not on what could have been a clear and succinct reporting of relevant and unbiased data and evidence.
N	CB24 6DT	I use the bridge as a pedestrian every morning and evening and do not mind if people cycle over it as it has never caused me any problems. However, I understood that the reason cyclists are asked to dismount is because the railing is very low and a cyclist who loses his/her balance could tip over the side onto the road. The Parish Council might want to look at the safety of the bridge for both pedestrians and cyclists. On dark winter nights it is hard to see where you are going as there is no lighting on the bridge.
N	Coles Rd	I do not think that cyclists should be made to dismount.
N	Alpha Terrace,	I think cyclists should be allowed to use the A10 bridge as it is an important route for pedestrians and cyclists, and it is a long span to walk with a dismounted bike. Asking cyclists to dismount is too often the default response where there is a perceived rather than a genuine risk of conflict. Dismounting is not always easy for people who use bicycles as mobility aids.

N	CB24 6DZ	I cycle across the bridge several times per week. I rarely encounter a pedestrian at the times I cycle. And when I do, it's not a problem to pass safely. Could the bridge be made safer for Cyclists? Yes. Higher barriers. Fix the bump at the park-and-ride end.
N	BH	No, I do not think a mandatory sign prohibiting cycling on the bridge should be installed.
N	MC	
N	Butt Lane	I do NOT support the proposal to change the A10 footbridge signage so that cyclists are requested to dismount. For most bridges this advice is advisory and I see no reason why this bridge warrants it. What we need is an improved bridge with better visibility and higher railings. We should be encouraging cyclists and pedestrians, as well as an attitude of patience and consideration of others in our village not encouraging a 'them and us' attitude which breeds intolerance.
N	CB24 6DP	I don't think that it should be made compulsory for cyclists to dismount to cross over the A10 bridge. - Someone walking their bike over the bridge takes up more room than someone cycling. - I have never encountered nor heard of any issues when walking or cycling over this bridge in the 30 years I have lived in Milton. We should be encouraging more people to cycle in the village and anti-cycling campaigns such as this do not help. I think Parish Councillor's time would be much better spent protecting vulnerable pedestrians and cyclists from the many dangerous, speeding drivers who blight our village.
N	CB5 8QE	
N	CB24 6ZH	No, I do not believe it should be compulsory for cyclists to dismount to cross the A10 bridge. Given its position and the fact that the cycle route along Butt Lane (connecting Milton and Histon/Impington) connects to it, I would consider it an important utility cycling link in Cambridgeshire. The 90-degree turn at the Milton end of it is undesirable, but we work with what we've got: I don't believe that restricting cycling across it is likely to help. A dismounted cyclist walking alongside their bicycle is almost two pedestrians wide, and I recall that bridge as being quite narrow (I don't use that route in winter, for unrelated reasons). Causing cyclists to double in width seems more likely to cause cyclist/pedestrian disagreement than to reduce it. My name is (removed), and I live in CB24 6ZH, 01223 321329 . In email, I am I fear unable to provide a signature.
N	CB24 6YS	no, we should not make it compulsory
N	MS	
N	CB24 6UB	Further comments on separate sheet ✖
	Total No	48 (Not counting Facebook figures)

*Further Comment – Hall End

I think it **should not be made compulsory** that cyclists have to dismount to cross over the A 10 bridge.

I feel that the current sign is sufficient.

I would like to clarify why I have come to this decision, despite the fact that I personally find that it is dangerous to cycle across the A 10 bridge. I would also like to point you to the hazards of antagonising cyclists demonstrated in the two blog articles at the bottom of this letter:

- **In my opinion, the main span of the bridge IS dangerous to cycle across because the railing is only just under 1 m high.**
 - On my bicycle, the cycle saddle is at railing height and therefore my body is centre of gravity is such that I certainly would fall over the railing if the bike tipped over. See photos attached.
 - I personally believe that it IS dangerous for both the pedestrian and cyclist to pass each other when the cyclist is mounted on the bicycle and cycling,
 - The cyclist could be inadvertently be knocked over the railing.
 - Cyclists rarely announce themselves and the pedestrian could be hurt by a cyclist from behind.
- **I personally believe that distance and cyclists on foot can pass each other with care. The bridge is just about wide enough at 1750 mm, see attached picture and also the video link here <https://youtu.be/a6JmE3JVB94>**
- **Despite the danger that I perceive, I do not think that the sign prohibiting the riding of pedal cycles across the bridge is appropriate, for the following reasons.**
 - **Cyclists will ignore it because:**
 - They do not think it is appropriate.
 - Most cyclists want to get from A to B as quickly as possible.
 - Most of them have cycled across the bridge without incident.
 - Dismounting is an inconvenience.
 - They are not aware of any accidents deaths that have occurred to cyclists on bridge (from the major span).
 - They personally feel that they judge the risk of cycling across the bridge to be very low, and will rationalise accordingly:
 - Including, that they rarely if ever encounter anyone else on the bridge, pedestrian or cyclist.
 - That if they do encounter pedestrian, cyclists take up far less space when mounted on a bicycle.
 - A dismounted cyclist takes up the greater width of the bridge and therefore presents an obstruction
 - Personally, as a cyclist, I will cycle onto the ramp if there are no pedestrians, get off and walk across the span, remount the bike at the other end if there are no pedestrians and cycle down. (My version of wanting to get from a to B as quickly as possible).
 - **I believe, a prohibition sign is not enforceable, unless you either have someone permanently manned at peak times on the bridge or install a surveillance system and follow-up with prosecutions.**
 - The costs of a new sign, and trying to enforce it currently far outweighs the benefit based on the current safety record.
 - It could criminalise some cyclists,

20 F

- Most likely, it would result in wider reaction from the vociferous cyclist community, vilify you and use up valuable committee time.
- **I do think that a suggestion by a fellow Milton resident, given on the Facebook discussion on the Milton community pages, would be worth following up. That is, a sign stating that the bridge has a low railing for cyclists.** My suggestion would be to place the sign on either side of the main span, in plain view of the cyclist approaching.
 - Attached also please find a mockup of a potential warning sign. (I appreciate that this may not meet up with the Department of transport's requirements) ☺

BLOG ARTICLES RELEVANT:

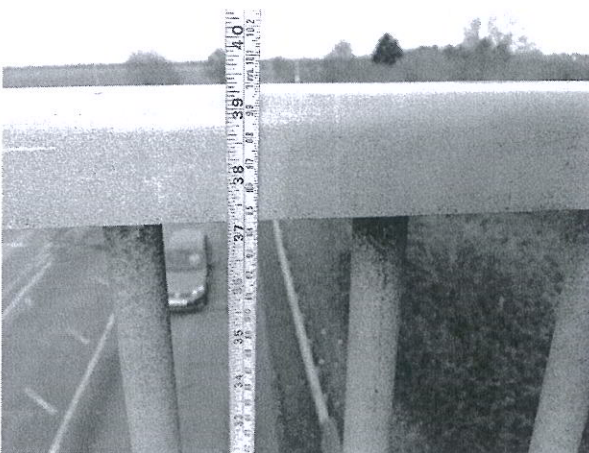
I humorously dared to challenge cyclists online who crossed the Chesterton Green Dragon footbridge on their bikes, rather than walking, back in 2013 – there was an immediate backlash – see “80 percent of Cambridge Cyclists are illiterate”: <http://www.miltoncontact-blog.com/2013/11/80-percent-of-cambridge-cyclists-are.html>

And the apologetic follow on

“Angry cyclists v Christmas Spirit: You reap what you sow on social media”

<http://www.miltoncontact-blog.com/2013/12/angry-cyclists-v-christmas-spirit-you.html> - this has the full list of angry responses to the blog and from Twitter.

I hope that this information contributes towards your next discussions on the issue. It certainly been one of the more lively debates on the Milton community Facebook pages.



#Further comment from EB24 6UB

As a follow up to my response to the question being asked I have the following questions / observations on the subject:

- Why is this being asked via the Milton Village View magazine only? Many of the bridge users do not live in Milton and would not be able to see or respond to this survey. How are the users of the bridge who don't live in Milton going to know about this consultation?
- Why is this question being asked at all? A decision about the suitability of a facility shouldn't be decided by a popularity poll? More so with a yes/no question which leaves no room for debate. These decisions should be evidence led based on the reported incidents, accidents, injuries that have occurred in the past.
- Looking at collision data from the police (STATS19) since 1999 I can only see one accident in the bridge in the past 20 years instead I can see the following:
 - 38 accidents in the Humphries Way A10 exit/entry to the village , with 7 serious casualties and 32 slight injuries.
 - 19 accidents in the Butt Lane crossing, with 17 slight casualties, 4 serious casualties and one fatal crash.
 - Based on the above, I am sure the Parish Council will be asking the residents of Milton if we should be closing said junctions to traffic, as they are clearly unsuitable to motor traffic.
- What would a sign change achieve? The current sign covers the legalistic point of view, as in, if a cyclist was to cycle on the bridge and an accident to occur the Parish Council can point out that cyclists are advised to dismount. This is why the Cyclists Dismount sign is there for.
- A sign change like the one proposed would only empower a minority of pedestrian users, like our esteemed Parish Councillor Mr Wildman to more assertively demand cyclists dismount. The cyclists who are already misbehaving and riding badly would continue to do so.
- In addition a change of sign would incur in a cost, a small cost, but still a cost. I would rather see this money spent in something more useful like higher railings, for example.

Finally, I am personally deeply disappointed that the Parish Council is even pursuing this anti-cycling initiative. If this question being asked was truly a safety concern then it wouldn't be asked in this format, if you can't see it or you don't understand this, then I can't help you with this.

Yes	Postcode	Comment
y	CB24 6BZ	My feeling is that the bridge is too narrow. For two way traffic. When I am walking on it, in order to combat my fear of falling, due to the whizzing cars below, I have to keep my eyes, three feet ahead of me, and concentrate on the middle of the bridge. I'm not a resident of the village, but have been visiting for many years to see my sick mother. Due to poor bus service to Milton, I have on occasions been forced to take Park and Ride bus, which I wouldn't normally choose. Sometimes this has been with a large suitcase. If I have encountered cyclists, on going up to the bridge. I have always let them go ahead. If I hear them coming and I'm on the bridge I stop, to let them pass.
Y	CB24 6BS	Thanks for the opportunity to give an opinion on whether the signage on the foot path bridge over the A10 should be changed. Due to safety concerns I vote that the signage be changed to compulsory dismount (YES). Please also pass on my thanks to the parish council for the excellent and often thankless work they do. I appreciate that they are giving their time to provide valuable services to the village.
Y	DW	
Y	CB24 6YU	
Y	CB246BS	
Y	M R	In regards to the A10 bridge, I personally support the move to prohibit cycle riding. I also noticed the lack of Councillors on the Parish Council, and was wondering how I might be able to get more involved.
Y	CB24 6DU	In my opinion cyclist should dismount to go over the bridge. I am a cyclist and I do not feel comfortable cycling on it as the railings are far too low to protect a cyclist, if they wobbled they would be straight over onto the busy road. It is too narrow for cyclists and pedestrians too.
Y	CB24 6ZG	
Y	CB24 6ZE	I live down Coulson Close and since the barrier was altered to allow trailer bikes easier access, I believe there have been far more near misses. Cyclist often travelling at speed from the bridge cycle straight out into Butt Lane without slowing down to see if there is a car coming from Coulson Close turning into Butt Lane. Due to the high hedging a driver does not see cycles riding at speed Until it is too late. I take care, but am always conscious there might be a cyclist. I think they should walk across the bridge, it would also be safer for pedestrians too.
Y	CB24 6 DP	It is imperative that cyclists dismount as from experience I have encountered as a regular user of the bridge 'possible' accidents not least to the elderly and children. The present signage has been in a dilapidated state far too long. It is commonsense that cyclists should dismount.
Y	CC24 6DG	
Y	CB24 6AH	
Y	CB24 6BP	
Y	CB24 6BW	
Y	CB24 6ZE	
Y	CB24 6BL	

Y	SC	Yes cyclist should be made to dismount. The Bridge is classified as a foot bridge hence the level of the parapets. This bridge is currently not fit for dual use and cyclist dismount should of been made compulsory when the foot bridge was put in.
Y	CB24	I am a local residing in Milton Village CB24 and have received the Milton village view. With regard to the questionnaire should A10 cyclists dismount my answer is YES cyclists should dismount. While using the bridge for quite a number of years cyclist used to approach me from behind and ring the bell requesting me to move aside along the narrow bridge so that they could cross by. I do not agree that in an area of constricted space, the pedestrian should be hassled to make way for cyclists to pass by. I consider this to be very inconsiderate especially when elderly children or perhaps even people with not such a sharp hearing being unable to hear a cyclist approach use the bridge. I think cyclists although a good mode of transport should ride sensibly and abide by the highway code. A noticeably high and still growing number of Cyclist now cross red pedestrian lights, zebra crossings and I have seen a lady crossing at a pedestrian crossing along Hills Road with a white stick at the red traffic light and a cyclist decides not to stop and almost comes into the path of the blind lady crossing almost colliding into her. This is really unacceptable. I have seen cyclist speeding as though they are taking part in Tour de France or using roads sometimes narrow ones enough to fit a car instead of parallel cycle lanes constructed for cyclist. Presumably constructing cycle lanes cost tax payers money and more often than not are left lying unused. I have observed this along Cambridge Road coming out of the Rowans near the Tesco side and along Barnwell Road. Unfortunately unlike cars where law can be enforced it is difficult to report cyclists who do not respect the highway code or pedestrian rights of ways. Therefore I feel strongly cyclist should dismount over the A10 bridge. Please do let me know the outcome of the questionnaire. Also could I kindly request as according to the GDPR please do not use my email details for sharing thank you.
Y		The Bridge is classified as a foot bridge hence the level of the parapets. This bridge is currently not fit for dual use and cyclist dismount should of been made compulsory when the foot bridge was put in.
Y	Butt Lane	As someone who lives in Butt Lane, I regularly walk over the bridge to the Park & Ride. I had always assumed that the cyclists just ignored the mandatory 'Cyclists Dismount' sign as I have never seen a cyclist dismount and walk their cycle over the bridge. This is fine when there are single pedestrians crossing the bridge but not so good for couples or people with prams/buggies. I believe the safe option should be the made it compulsory for cyclists to dismount but, if there is nobody to police this, it may just be a waste of the Council's money.

Y?	Fen Rd	<p>Further to the call for views on the question of the status of cyclists on the A10 footbridge as presented in the recent Village View No.136 - Jan. 2019, I am sending you this e-mail which provides the opportunity to expand on the pros. and cons. of cyclists dismounting or not on this bridge. My wife, daughter and I use the bridge both as pedestrians and cyclists when not using the car to get to the P & R. Essentially, the narrow foot way on the bridge does not allow for safe passing of a pedestrian and mounted cyclist, particularly when the cyclist comes from behind, most likely not using a bell, and then the pedestrian does not know whether to stop or risk stepping in front of the cyclist. The conclusion from this scenario is simply, without exception a very dangerous situation. There is a high risk of injury to both pedestrian and cyclist on the bridge and even the possible worst scenario of one the people involved being catapulted over the low (by modern standards) metal fence bordering the bridge, down onto the intimidating A10 below. To add to the hostile environment is lack of lighting over the bridge after dark, notably in the short winter days. The conclusion from this is that it is irresponsible of authorities to permit a cyclist to cycle over the bridge when there is a high risk of collision with a pedestrian, or indeed another walking or mounted cyclist. As it stands at present, in the event of an accident as defined above, the authorities would be vulnerable to an unwanted and expensive legal case of negligence for not taking appropriate action for ensuring the safety of the public. With reference to the definition of the existing blue signs saying, 'Cyclists dismount', to us it clearly means an order 'must dismount', not just a soft advisory notice. A more demonstrative notice would be 'Cycling prohibited' which to most reasonable and sensible people, means it is against the law resulting in police action if you do not abide by the sign. Finally, the Jane Coston bridge over the A14 is constructed to resolve the limitations of older bridges like the one over the A10 because it has separate pedestrian and cycling lanes and a much higher and substantial bordering metal fence. Without delay, the A10 footbridge must be replaced by a bridge conforming at least to the modern standard of the Jane Coston bridge. One assumes that a new bridge would have to be built next to the existing one so that the latter is used in the short term to allow the present access to continue to the P & R and beyond until the new bridge is built.</p>
	Total Yes	21 (not counting facebook figures)
		Comments
A	CB24 6UB	Abstain, as a prohibition sign won't be enforced due to a serious lack of Police staff.
		Facebook
		<p>As part of gathering feedback on the cycle bridge consultation, we ran an online poll on the topic in the Milton Community Facebook group. Here are the results, for your consideration</p> <p>We asked: "Should it be made compulsory that cyclists have to dismount to cross over the A10 bridge?"</p> <p style="text-align: right;">No -</p> <p>145</p> <p>Yes - 82</p> <p>Other - 10 "Other" was adjusted for duplicate votes.</p> <p>Mary-Ann</p>

Dear Gareth

Further to my email with Stuart (see below) about the A10 footbridge states. Please can you confirm that the bridge is a footbridge and not a dual use bridge (hence the height of the parapets).

Also if the bridge was installed as a footbridge why were compulsory dismount signs for cyclist not put up instead of advisory ones. I know the bridges over the river can have advisory signs but they are dual purpose bridges.

Kind regards.

Sarah Corder
Clerk to Milton Parish Council

Dear Sarah,

I will have to go and consult with my colleagues in Policy and Regulation regarding the why's and what's with regard to compulsory and advisory signs. The bridge was designed and built as a footway bridge and thus cycling on footways may be deemed forbidden without the need for legal signs? It certainly is an area that often needs clarification where new cycle ways approach former footway designed bridges and often the legal status of the footway has remained unchanged. With that in mind I will also check with our Assets Team as to what the legal status of Butt Lane footbridge is.

Kind regards

Gareth

Gareth Guest I.Eng MCIHT
Project Manager – Bridges

Dear Gareth

Thank you for your information and clarification of the A10 footbridge.

There seems to be misleading signage at the bridge as people have been cycling over the bridge for many years. It may need clarification that is a footbridge and removal of the confusing sign on the Park & Ride site (which show a dual purpose sign).

Kind regards

Sarah Corder
Clerk to Milton Parish Council

Dear Sarah,

Yes, I think that sign has been turned round and is for the shared use path towards Impington. I will get it turned and also arrange for two new signs at each end of the footbridge. I suggest they say "footbridge cyclists dismount" if you are ok with this?

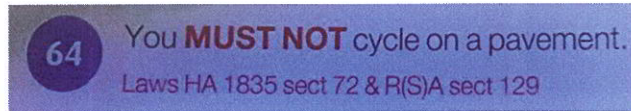
Policy and Reg and our Assets team have confirmed that the bridge still has the legal status of a footway and does not require a legal TRO cyclist prohibition order and signs.

received 21 February 2019

Kind regards

21

Following on from the discussions of the status of the bridge over the A10 at Butt Lane I understand that Council Officers have confirmed that the bridge is classified as a footbridge. That would suggest that cycling is not permitted as indicated in the Highway code page 22.



I see two points of confusion over the use of the bridge. Firstly, dialogue on Social Media indicates there is a misconception of the meaning of the Informational Blue Cyclists dismount sign with some believing that it is advisory only.



Pedal cyclists to dismount at end of, or break in, a cycle lane, track or route

The official government guidance on traffic signs¹ states that cyclists dismount. Whilst the sign itself is informational it is not optional because of the underlying laws HA 1835 sect 72 and R(S)A sect 129 that apply to pavements and footpaths. Interestingly HA1835 was written before the invention of the pedal cycle but is held to apply.

Secondly there is an apparent inconsistency in the signs on the bridge.



At the eastern entry it is simple. The footbridge is an extension of the footpath from Butt Lane. The blue informational sign is advising that it is an entry to a footpath. Cyclists are required to dismount because of the underlying law.



Signs at the two exit points at the western end of the bridge correctly indicate that the path becomes integrated at those points at the beginning of the shared route into the P&R and on towards Impington.



The inconsistency in signage occurs at the western entry.

It correctly shows that motor cycles are forbidden and that cyclists dismount as they are entering a footpath. These two signs match those at the eastern entry.

However, it also indicates that the path is integrated which is contrary to the confirmed status of the bridge as being a footpath.

In conclusion I would suggest that Council Officers should be requested to remove the integrated sign at the western entry to bring it in line with that at the eastern end and thereby consistently show signage appropriate to a footbridge.

Compiled by Don Wildman

¹https://assets.publishing.service.gov.uk/government/uploads/system/uploads/attachment_data/file/519129/know-your-traffic-signs.pdf

Clerk Milton Parish Council

From: James Paxman <James@cambedrailroad.org>
Sent: 10 February 2019 13:00
Subject: EWR Consultation
Attachments: Options-BE+CBRRw.pdf; Options-ACD'.pdf



Dear Councillor,

You may be aware the East West Rail Co has started a non-statutory public consultation seeking views on their five different Route Options (A to E) for the Bedford to Cambridge railway line. We are writing to you to highlight that some of those Route Options include your Parish within their hatched areas of search or lie very close to it, as we have shown on the two more detailed traced maps attached (with our Alternative).

In our opinion none of the five Options are suitable. None of them demonstrate any real compatibility with the recommendations of the National Infrastructure Commission (as accepted by Government) which very clearly set down a principle that the trainline should share the East West Expressway (A428) 'transport spine', where it could connect both the current and the many already approved future centres of population.

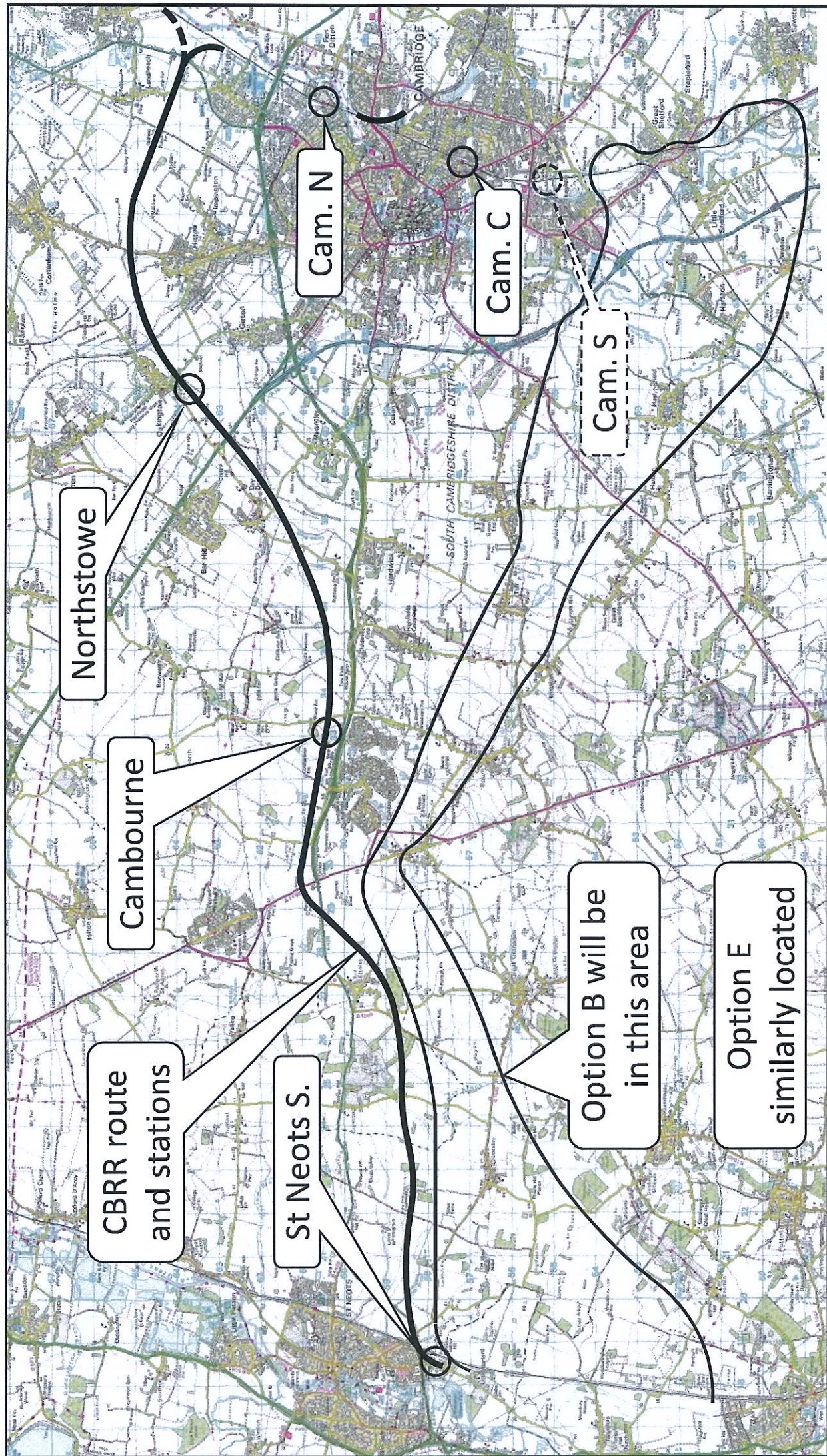
CamBedRailRoad has promoted an alternative routing from Bedford South through new stations at St Neots South, Cambourne, Northstowe and Cambridge South, via Cambridge North and Cambridge Central, reinforced by our [Arguments for Northern Approach into Cambridge](#). Our route provides transport for almost 54,000 more residents than EWR Co's Options B & E and over 100,000 more than Options A, C and D. It has been supported by residents, Parish Councils (including Cambourne), Town Councils (including St Neots) and many of our local MPS and Councillors.

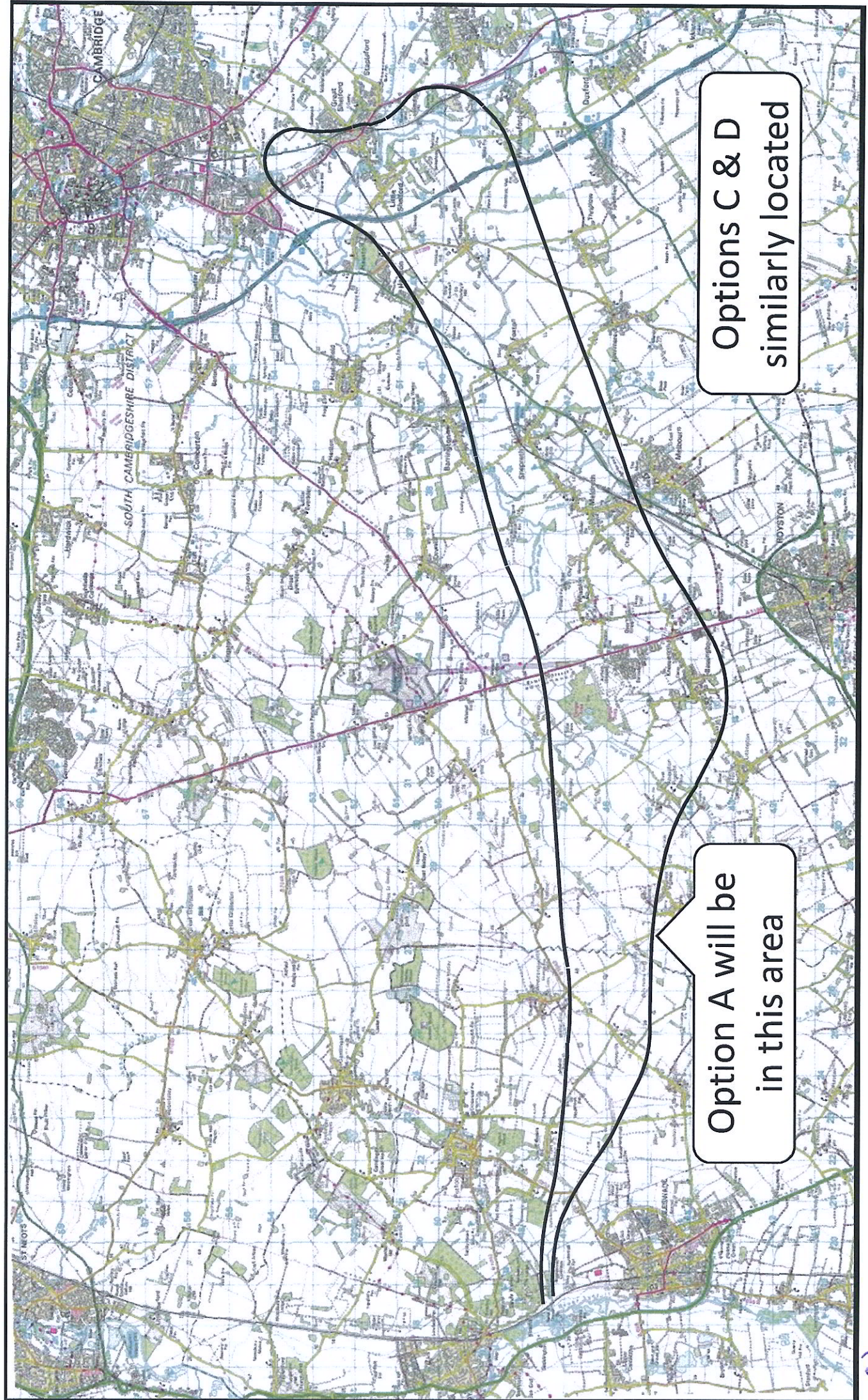
Our further major concern is that the consultation makes no reference to the level of housing development that will come with any railroad. EWR Co considers that Bassingbourn could deliver up to 30,000 new homes (about 5 times the size of Royston) and Tempsford up to 50,000 (about 10 times the size of Sandy). Are you prepared for a new development of such a size in your vicinity?

We would ask you to please ensure that your residents are aware of this consultation and exercise their right to respond, by the deadline of 11 March 2019. We suggest how, at our [Guidance on completing EWR Co's Feedback Form](#). We have a once in a lifetime opportunity to deliver major infrastructure in a sensible and coherent way combining road, rail and housing: the Options currently promoted by EWR Co fail to do that.

There is a great deal more at www.cambedrailroad.org with further maps and links to a wide range of resources which we shall be supplementing shortly. We would of course be happy to come and explain our proposals to you.

Sebastian Kindersley
Cambridgeshire County Councillor - Gamlingay Division





Options C & D
similarly located

Option A will be
in this area

Community Centre Report – March 2019

Maintenance/Improvements:

All the spot lights in the main hall have been upgraded to LED's
We have a new fridge in the Annexe as the old one was no longer fit for purpose

Bookings:

Unfortunately, the Wednesday morning and Thursday evening
Yoga classes have been cancelled, as the instructor has decided to take a break

Youth Building:

Nothing to report

North Lodge

Nothing to report

Vandalism:

Nothing to report

Andy Gray
Community Centre Manager
25/02/2019

District Councillor report – March 2019 – Judith Rippeth

Landbeach Tithe Barn: Listed buildings consent was granted on 12th February so the programme of repair works can now commence. Planning officers are in the process of finalising the lease over the next couple of months. The main change to the lease is to grant a licence to allow the serving of alcohol during events which will broaden the scope of fundraising activities. I will continue to press planning officers on this issue so that a new lease can be granted as soon as possible.

Emmaus: I completed a Level 1 course on 3rd February in 'Dual Diagnosis training' with other Emmaus trustees and staff members. It was interesting to learn about the effects of alcohol and drug misuse on the brain, the individual and of course wider society. I also learnt more about the kind of issues that the companions, paid and voluntary staff are dealing with on a daily basis and how best to support. The course was informative on the street drugs available and an education in the various substances and what is currently in vogue; although alcohol addiction is still the most prevalent issue. Dual diagnosis deals with the impact of drug misuse and mental health issues, such as clinical depression, and how they often go hand in hand and how to break that vicious circle. Not only was the day highly educational, it also highlights the challenging task Emmaus faces on a daily basis and the fantastic work they do.

Waterbeach Greenway: I have heard back from the Greater Cambridge Partnership regarding the Greenways project. They reported that they had received fantastic feedback of hundreds of responses for each individual project with some great ideas put forward. They expect to make the Waterbeach consultation findings available in the next couple of months. Subject to a new tranche of funding they hope to come back with updated proposals – hopefully this project can get off the ground in the near future!

Recycling and bin collections: From Friday 15th March the green bin will return to a fortnightly cycle of collection. From 1st April South Cambs will be charging for additional green bins to be emptied. This will bring the council in line with Cambridge City with whom it shares a waste service and with other neighbouring authorities. The small annual charge of £35 (£20 up until October 2019) should hopefully encourage those with additional garden waste (and probably a larger garden) to compost at home which is a far greener alternative than a diesel lorry collecting it for the composting process to be carried out elsewhere.

District Councillors Report – for March 2019 – Hazel Smith

Change of chief officer at South Cambs

The Chief Executive and Head of Paid Service at South Cambs DC, Beverly Agass, has taken early retirement in a deal that involved SCDC making up her pension contributions.

The new Interim Chief Executive is Mike Hill, who has been Director of Health and Environmental Services and also during the last 6 months interim Director of Housing. There will be a reorganisation to more closely focus the structure of the council's organisation on the priorities and plans of the new ruling LibDem administration, with more emphasis on investment, house building and green issues.

One of the last events the Chief Executive led was a successful awards ceremony for staff, to celebrate recent achievements. Tellingly the member of staff most appreciated by colleagues was a member of the ICT helpdesk team. There were some great teams and individuals across the council being honoured for their contributions, from those developing new houses, to those working with communities, and those collecting the recycling.

Work is going on to put solar panels onto the roof of the council depot in Waterbeach. This will be the first of our green initiatives in South Cambs.

North East Cambridge

The consultation on the Area Action Plan for the area around the station and the redevelopment of the sewage works started last week, and goes on till 25th March. It includes the Science Park, which they aim to make more diverse as it intensifies with the redevelopment that Trinity College have planned. I went out with officers and delivered a leaflet to all the addresses on Fen Road Chesterton, as the council is very keen to involve all the neighbouring communities in the consultation.

Waterbeach New Town Planning meetings

The council is running a comprehensive series of sessions for the Planning Committee and other interested councillors, on the details of the two applications. The viability of the two developments is being discussed, and both applications have a lot of infrastructure to build, which means they are both offering amounts of affordable housing well below the 40% we would like them to deliver. We are told this has gone up from 8% to 23% but is still not up to our aspirations. The outline details of viability assessments that justify the amount of affordable housing are now supposed to be in the public domain once they are complete (as required in the NPPF), but we may not get much detail. A viability review mechanism for developments that are built out over a long period may allow for more affordable housing to be required at a later stage of the development, depending on how conditions are at the time, so for a 29-year development not everything is fixed for ever at the start.

Urban and Civic had given some presentations on the drainage, electricity, gas, water and sewerage arrangements they propose for Phase 1. This includes some electricity generation off-site at Chittering, and a separate local grid for electric car charging. Then there was a session on air quality and sustainability, and they explained the lengths they were going to to create a sustainable community, including links with Emmaus, the Army, apprenticeships, and a jobs brokerage function. There followed one on flood and water management, including an introduction to Internal Drainage Boards, and the responsibilities of the Environment Agency and the County Council as Lead Flood Authority. There is a whole day of briefing sessions on 28th Feb to come.

Greater Cambridge Partnership – Choices for Better Journeys

There is another consultation coming up on the next phase of walking cycling and bus improvements for Cambridge and its necklace villages. The detail of the Milton Road improvements is nearly fixed now, and a recent Local Liaison Forum meeting went through the details.

The **Combined Authority** is also holding meetings about its new Transport Strategy for the wider Cambs and Peterborough area. So many meetings – it's about time we had some actual changes on the ground

The **litter pick** on Sunday went well with 9 of us collecting litter. I spent quite a time at the Rowans play area (teletubby land), removing rubbish from under the hedges. The Tesco area is a disgrace: the Parish Council should be asking them to do more cleaning up themselves.

Hazel

Milton Parish Council PAYMENTS LIST

Voucher Code	Date	Minute	Bank	Cheque No	Description	Supplier	VAT Type	Net	VAT	Total
371 Website	05/02/2019		Unity Trust Bank		Website hosting	1 and 1 Internet Ltd	S	6.99	1.40	8.39
372 Payroll Asst Clerk	24/01/2019		Unity Trust Bank		Salary	John Barrett	E	60.76	0.00	60.76
373 Telephone / Broadband	11/02/2019		Unity Trust Bank		Office Mobile	Three	S	15.83	3.17	19.00
374 Website	08/02/2019		Unity Trust Bank	DD	Website hosting	1 and 1 Internet Ltd	S	16.98	3.40	20.38
375 MCC grounds maintenai	04/02/2019		Unity Trust Bank		MCC Grant Paid	Town & Country Tree Si	S	3,100.00	620.00	3,720.00
376 Christmas	04/02/2019		Unity Trust Bank		Christmas Lights	Town & Country Tree Si	S	180.00	36.00	216.00
377 Tree Maintenance	04/02/2019		Unity Trust Bank		Trees	Town & Country Tree Si	S	180.00	36.00	216.00
378 Allotment Maintenance	05/02/2019		Unity Trust Bank		Allotments	Buchans Landscaping & S	S	262.19	52.44	314.63
379 Cemetery Maintenance	05/02/2019		Unity Trust Bank		Cemetery	Buchans Landscaping & S	S	152.46	30.49	182.95
380 Grass Cutting	05/02/2019		Unity Trust Bank		Grass Cutting	Buchans Landscaping & S	S	686.44	137.29	823.73
381 MCC-NLP grass cutting	05/02/2019		Unity Trust Bank		MCC Grant Paid	Buchans Landscaping & S	S	182.71	36.54	219.25
382 MCC grounds maintenai	05/02/2019		Unity Trust Bank		MCC Grant Paid	Buchans Landscaping & S	S	939.49	187.90	1,127.39
383 Stationery	01/02/2019		Unity Trust Bank		Stationery	ESPO	S	31.28	6.26	37.54
384 Website	07/02/2019		Unity Trust Bank		Website hosting	1 and 1 Internet Ltd	S	3.99	0.80	4.79
385 MCC cleaning	01/02/2019		Unity Trust Bank	SO	MCC Grant Paid	Atkins Gregory (The Cle	S	1,028.52	205.70	1,234.22
386 Payroll Pension (Employ	12/02/2019	DD	Unity Trust Bank		Pension payment	Smart Pension	E	31.62	0.00	31.62
387 Payroll Pension (Employ	12/02/2019	DD	Unity Trust Bank		Pension payment	Smart Pension	E	52.70	0.00	52.70
388 S137 Warden's Pension	12/02/2019	DD	Unity Trust Bank		Pension payment	Smart Pension	E	33.38	0.00	33.38
389 S137 Warden's Pension	12/02/2019		Unity Trust Bank	DD	Pension payment	Smart Pension	E	55.63	0.00	55.63
390 Payroll Highways	25/02/2019		Unity Trust Bank		Salary	Philip Adams	E	244.37	0.00	244.37
391 S137 Payroll Warden	25/02/2019		Unity Trust Bank		Salary	Tracey Ebbon	E	1,018.67	0.00	1,018.67
392 Payroll Clerk	25/02/2019		Unity Trust Bank		Salary	Sarah Corder	E	1,031.13	0.00	1,031.13
393 Payroll Asst Clerk	25/02/2019		Unity Trust Bank		Salary	John Barrett	E	76.54	0.00	76.54
394 Office Sundries	05/02/2019		Unity Trust Bank		lighting	ESPO	S	20.49	4.10	24.59
Total								9,412.17	1,361.49	10,773.66

33

Milton Parish Council RECEIPTS LIST

Voucher Code	Date	Minute	Bank	Receipt No	Description	Customer	VAT Type	Net	VAT	Total
161 Community Care	21/01/2019		Community Care £		Community Care Fee	T G	E	78.00	0.00	78.00
162 Community Care	17/01/2019		Community Care £		Community Care Fee	A H/M H	E	156.00	0.00	156.00
163 Community Care	28/01/2019		Community Care £		Community Care Fee	L C/P C	E	117.00	0.00	117.00
164 Community Care	18/01/2019		Community Care £		Community Care Fee	J G	E	78.00	0.00	78.00
165 Community Care	21/01/2019		Community Care £		Community Care Fee	D G	E	78.00	0.00	78.00
166 Community Care	17/01/2019		Community Care £		Community Care Fee	F L	E	130.00	0.00	130.00
167 Community Care	21/01/2019		Community Care £		Community Care Fee	T S	E	78.00	0.00	78.00
168 Community Care	24/01/2019		Community Care £		Community Care Fee	B D	E	90.00	0.00	90.00
169 Community Care	31/01/2019		Community Care £		Community Care Fee	M B	E	78.00	0.00	78.00
170 Community Care	25/01/2019		Community Care £		Community Care Fee	J A	E	78.00	0.00	78.00
171 Community Care	30/01/2019		Community Care £		Community Care Fee	M S	E	80.00	0.00	80.00
172 Community Care	21/01/2019		Community Care £		Community Care Fee	C D	E	60.00	0.00	60.00
173 Allotments Rents	04/02/2019		Unity Trust Bank		Allotment Rent	M C	E	15.00	0.00	15.00
174 Allotments Rents	07/02/2019		Unity Trust Bank		Allotment Rent	G Betson	E	15.00	0.00	15.00
175 Community Care	31/01/2019		Community Care £		Community Care Fee	E H	E	78.00	0.00	78.00
176 Community Care	29/01/2019		Community Care £		Community Care Fee	P C	E	78.00	0.00	78.00
177 Community Care	30/01/2019		Community Care £		Community Care Fee	D C	E	130.00	0.00	130.00
178 Community Care	10/02/2019		Community Care £		Community Care Fee	M B	E	78.00	0.00	78.00
179 Community Care	06/02/2019		Community Care £		Community Care Fee	N F	E	78.00	0.00	78.00
180 Interest Santander	02/02/2019		Santander \$106 A		Interest	Santander	E	19.35	0.00	19.35
Total								1,592.35	0.00	1,592.35

34