



01/01/2000 00:01 JD

Saturday 1st January at 00:01

## **Fireworks celebrating the beginning of the new millennium**

The local roads filled with hundreds of excited chattering people carrying lit candles as they made their way up to the recreation ground to watch the firework display. The entertainment started with a lone horn playing a fanfare followed by the Millennium Resolution. This was written especially for the millennium and was read out at celebrations all over the country. The first fireworks whooshed into the sky as midnight struck and everyone joined in Auld Lang Syne.

Saturday 1st January

## **Millennium dawn over Milton**

Early in the morning we travelled by car to the Milton Landfill Site, and carried three cameras up onto the restored part of the landfill. The trek was both muddy and smelly, but it was marvellous to be there as the dawn arrived. We took a series of photos over about 50 minutes to make sure there was a record of the dawn arriving. We watched as sets of street lights switched off together followed by other lighting as the light improved. There were no cars on the road and we stood quietly enjoying the view as most of Milton slept.



01/01/2000 JEC



## 2 January – 8 January



03/01/2000 JEC



04/01/2000 HMS



05/01/2000 JEC



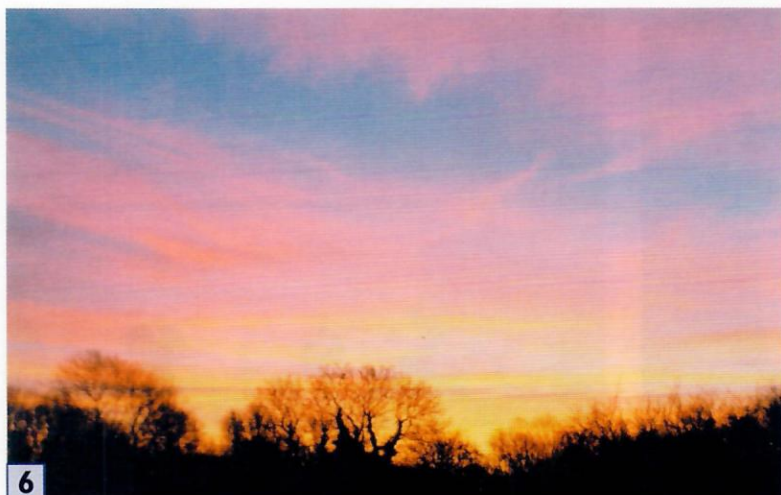
07/01/2000 AGS



06/01/2000 HMS



## 2 January – 8 January



07/01/2000 JLC



02/01/2000 15:30 JEC



08/01/2000 MJS

**1 Sunday 2nd January at 3.30pm**

### **Milton Colts Football dads \***

Dads of the Milton Colts Football Club with the trophy they retained after a 2-2 draw went into penalties in their annual match against the dads of Histon Colts Football Club.

**2 Monday 3rd January**

### **Car park full**

People queued in cars desperate to get into Tesco's following only two days closure of the store.

**3 Tuesday 4th January**

### **Play equipment for youth**

Young people looking at the display of different options of play equipment for teenagers. A Community Centre committee also talked to Scouts and Guides, youth groups and Year 6 at the school about building a new play area on the Coles Road Recreation Ground. (See December 20th)

**4 Wednesday 5th January**

### **Christmas tree lights**

The Parish Council used to put up a Christmas tree with lights next to the war memorial in Coles Road but it always suffered from vandalism. In recent years the village has expanded to the west, so it was decided to put the lights on this tree in the centre of the village near the village sign.

**5 Thursday 6th January**

### **Start of the Spring Term**

Children and parents wait for the bell in the infant playground at Milton Primary School.

**6 Friday 7th January**

### **Dawn over Milton Country Park**

As viewed from Coles Road.

**7 Friday 7th January**

### **Music Appreciation \***

Ladies at the music club in All Saints' Church Hall. The club is open to anyone who likes listening to classical music, and meets monthly.

**8 Saturday 8th January**

### **Sky over Milton**

East Anglia is noted for its panoramic skies. This striking view was taken in Old School Lane looking south towards Cambridge.



## 9 January – 15 January



09/01/2000 11:45 JEC



12/01/2000 12:00 MJS



13/01/2000 DS



15/01/2000 10:30 MJS



## 9 January – 15 January



2

10/01/2000 19:00 JLC



3

11/01/2000 14:00 HMS



6

14/01/2000 14:15 JD

1 Sunday 9th January at 11.45am

### **All Saints' after the morning service**

Rev'd Ian Cowley at the door of All Saints' Church as worshippers leave after morning service.

2 Monday 10th January at 7pm

### **Milton Parish Council's first meeting of the millennium \***

3 Tuesday 11th January at 2pm

### **A14 Cycle Bridge meeting**

Stakeholders' meeting discusses Owen Williams' design options for the cycle bridge. This group has been liaising over the planning for the cycle bridge for 18 months so far. Representatives have come from Sustrans, Waterbeach, Milton Parish Council, County Council, District Council and City Council, Highways Agency, and Owen Williams Consulting.

4 Wednesday 12th January at 12 noon

### **Old School Lane**

The old school was closed in July 1958 and strangely was not in Old School Lane, but in Fen Road.

5 Thursday 13th January

### **Carpet bowls in the afternoon**

The village has a thriving Carpet Bowls Club, with three league teams. Included in this photograph are (left to right) Keith Overall, Jim Daniels, George Talbot, Mary Daniels, Alan Rudd and, with back to camera, Eric Dunlop, who sadly died later in the year.

6 Friday 14th January at 2.15pm

### **Day Centre millennium celebration**

Jan Chessum and Jackie Strickland cutting the Millennium Cake at Milton Community Centre. They are two of the volunteers who help run this group for the frail and elderly in the village.

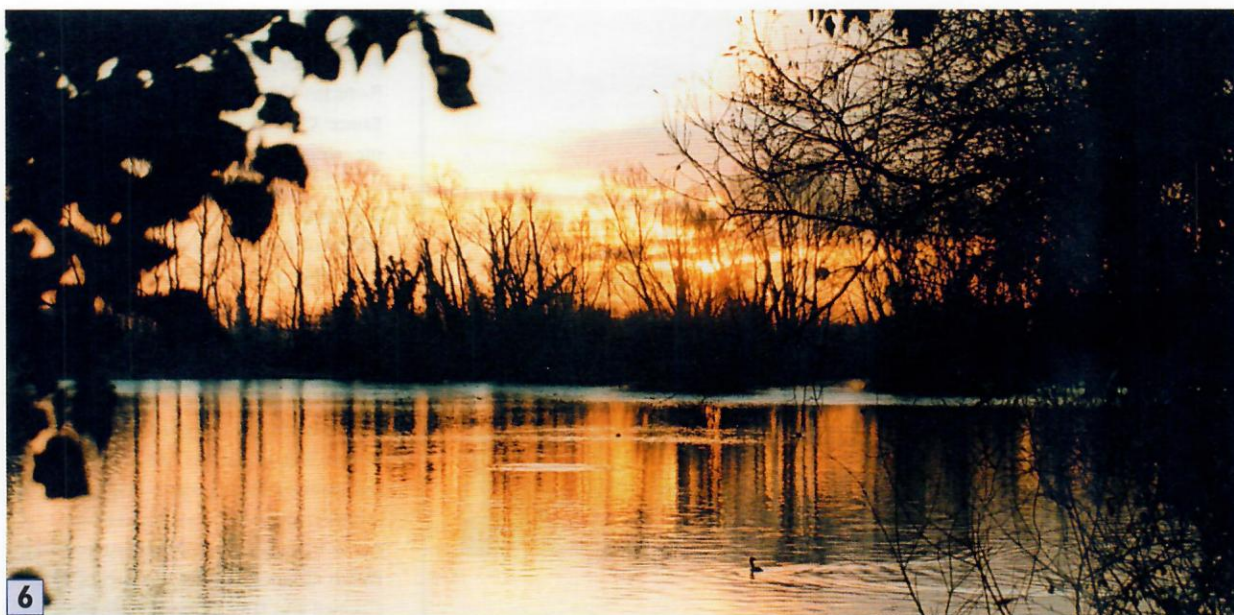
7 Saturday 15th January at 10.30am

### **Gunnell gravestones in the churchyard**

The Gunnell family were important members of Milton village in the 19th century and up to the 1930's – at one time Lords of the Manor.  
Sic transit gloria mundi



## 16 January – 22 January



6

21/01/2000 ARH



7

22/01/2000 14:00 JD



3

18/01/2000 MJS



2

17/01/2000 MJS



## 16 January – 22 January



19/01/2000 14:30 ARH



20/01/2000 13:00 REH



16/01/2000 JEC

1 Sunday 16th January

### **Sunset over the allotments**

A view of the allotments as the last light of the evening faded following a spectacular late afternoon show of wonderful rainbow-like colours on the dark background, affecting the whole of the sky.

2 Monday 17th January

### **Fire at the vet's in the High Street**

The fire took place in the early hours and caused much damage. The photo was taken as the fire brigade was clearing up.

3 Tuesday 18th January

### **Enterprise Club**

There are some thirty or so members of the Enterprise Club, which meets on the first, third and fifth Tuesday of each month. Usual pursuits include Scrabble, cards (seen here) and snooker.

4 Wednesday 19th January at 2.30pm

### **Planet Videos and the village Post Office in Coles Road**

5 Thursday 20th January at 1pm

### **The weekly Lunch Club in All Saints' Church Hall**

The Lunch Club, which first started in the old rectory in 1980, is run by volunteers and provides a meal and an opportunity to get together for retired people who live alone.

6 Friday 21st January

### **Sunrise over Milton Country Park**

7 Saturday 22nd January at 2pm

### **Opening of sun clock**

Opening ceremony of the sun clock in Milton Country Park. Inset shows the photographer's shadow showing the time.



## 23 January – 29 January



23/01/2000 JD



25/01/2000 AGS



26/01/2000 14:00 HMS



29/01/2000 ARH



28/01/2000 10:30 HMS



## 23 January – 29 January



7

29/01/2000 10:30 ARH



2

24/01/2000 11:15 AGS



5

27/01/2000 09:00 HMS

1 Sunday 23rd January

### Milton Fen

Looking towards Milton from the river as rain clouds move away.

2 Monday 24th January at 11.15am

### Trolley Bus trip

Loading provisions after shopping at Tesco Stores. Patrons from Milton are picked up by the Dial-a-Ride bus, which is financed jointly by the Gallagher Trust and the Parish Council.

3 Tuesday 25th January

### Practice shot of *Prunus Sargentii*

The digital camera goes down in a Coles Road garden - whoops.

4 Wednesday 26th January at 2pm

### Cormorant in Milton Country Park

A cormorant stretches its wings in the Country Park, on a small island in Dickerson's Pit. Cormorants are occasional visitors to the Park – the last time I saw one there it was standing next to a heron.

5 Thursday 27th January at 9am

### Mr Spiers' old caravan, Fen Road

Dennis Spiers had lived in a caravan inside the barn on the right. He had started to build a bungalow on his land behind the barn, but planning permission was refused. He died around New Year 2000.

6 Friday 28th January at 10.30pm

### Quiz night

This is one of a series of quiz nights run by Milton School Association, which have all been very popular.

7 Saturday 29th January at 10.30am

### Feature on Milton

Villagers are photographed by the Cambridge Evening News for a feature on Milton which was published in the newspaper.

8 Saturday 29th January

### Lilac Cottage in Church Lane

This thatched cottage built in the 17th Century appears in many earlier photographs of the village.



## 30 January – 5 February



05/02/2000 HMS



02/02/2000 20:00 JS PSB



04/02/2000 HMS



30/01/2000 11:00 ARH





3

01/02/2000 JD



5

03/02/2000 21:00 PSB



2

31/01/2000 10:30 ARH

1 Sunday 30th January at 11am

## Lock

A narrow-boat heads down river after leaving Baits Bite Lock. The lock gate at the southern end was changed to an electric guillotine type gate in 1989.

2 Monday 31st January at 10.30am

## Dangerous junction

This busy junction of Butt Lane and the village bypass (A10) has been the site of several accidents. The lorry at the junction is loaded with clay from the Milton Landfill Site. The bypass was completed in 1978.

3 Tuesday 1st February

## Abbeystone House, High Street

This cottage was built in the 17th Century and renovated to its present condition in the late 1990's. Earlier owners were the Clarke family. Mrs Joyce Clarke's mother Eva Goodin started Milton Laundry there in the early 1920's. Joyce's two sisters, Desra Goodin and Susie Linger live in the High Street. Their great grandmother had number 7 built as a farmhouse. Abbeystone House was the labourer's cottage.

4 Wednesday 2nd February at 8pm

## Karate

Work-out at the Community Centre.

5 Thursday 3rd February at 9pm

## All Saints' Church Home Group

Held at 10, Old School Lane.

6 Friday 4th February

## Snowdrops and aconites in the churchyard

7 Saturday 5th February

## The junction of The Oaks onto The Rowans

This was previously the site of greenhouses belonging to Alexandra Nurseries.