

Parish Council Office
Coles Road
Milton
Cambridge
CB24 6BL



Clerk to the Council
Jim Daniels
Tel: 01223 861447
Fax: 0871 433 9275
Email: clerk@miltonvillage.org.uk

PARISH COUNCIL

Annual Report 2006

I would just like to start by mentioning and thanking the Parish Councillors that have left the Parish Council during the last year.

Lynne Twinn stood down last year due to ill health. She was a great asset to the Parish Council giving many years of service and especially supporting the work with youth in the village. Chris Lock moved away and Elizabeth Baker stood down due to pressures of work but both these members took great interest in the Parish Council especially in youth – so a formal thanks to these three members whose contribution we miss.

During the year we welcomed our new councillors Jenny Payne and Phil Badley and welcomed back Ian Davis after an 8 year break.

Our work as Parish Councillors has covered a wide spectrum of issues during 2005-06.

We have issued 2 information sheets one about the country park meeting in January and the other was about the changes in the licensing law and the applications from Tesco, the pubs and other local businesses. I would like to thank the village view delivery people, Parish Councillors and all those who helped us keep the village informed.

Over the years the workload of a Parish Council has increased tremendously as compared to 100 years ago or even 50 years ago. Now Parish Councils cover a full range of issues as you will see from the minutes of last year so it is difficult to cover everything we do in a few minutes of a report.

We have a set of committees working on different projects and reporting back to the Parish Council each month. We also appoint representatives for various duties such as Country Park, Landfill liaison, Milton Charities etc.

During the year we have followed up a range of traffic related issues including asking for a sound barrier on the A14 when it is widened and we can also report that the pedestrian crossing near Tesco that we asked for and are paying towards is now installed.

The Parish Council owns the recreation grounds but without the foresight of the people involved 20 years ago and the loan that was taken out it seems unlikely there would have been the community centre on this site. The final instalment on this loan was paid in October last year. The Parish Council continues to subsidise the Community Centre to help with the running costs of this wonderful well run facility that so many village groups use.

The Parish Council employs its own village cleaners, owns and manages the allotments and the Cemetery in Landbeach Road and pays for the maintenance and management of these sites. We also pay for village grass cutting and maintenance of open spaces and have recently changed our contractors to Buchan Landscapes. We hope you are as pleased as we are with the contractors and the professional job they do.

We also have a Community Care Committee which oversees the care of the elderly and employ Tracy Ebbon and more recently we have employed a relief warden. We have a Community Minibus group who are responsible for the smooth running of the scheme which allows local people and groups to hire the mini bus.

The Youth Committee have had a busy year with the loss of the old youth building and the planning of the new one. A fantastic job has been done in raising enough funds to start putting up the new building in hopefully June. In addition our Play Committee has had a whole range of issues relating to play equipment on our many play areas. We have maintained, repaired and updated where needed. There has been a lot of voluntary work in these areas so thank you to all involved.

Under Planning we have covered a whole range of work from houses in the village to Science Park plans and more recently the Rowing Lake plans.

On general issues we have been in touch with the police over the year about various concerns and we are working hard trying to obtain more recreation land to accommodate the needs in particular for the colts' football.

If the Parish Council disappeared tomorrow there would be a whole range of things that would not happen or be locally managed so I would just like to thank all the Parish Councillors and staff for all their commitment, professionalism and voluntary work over the year.

Lastly I would like to thank our clerk who has the unenviable task of managing all these issues, supporting our members and keeping them informed.

We are pleased that at last we now have a purpose built office to accommodate everything which we hope will benefit the village.

Jane Coston

Chairman - April 2006

What does Milton Parish Council do?

Milton Parish Council is responsible for an area bounded by the River Cam to the east and the byway called the Mere Way to the west. The northern boundary runs just south of Landbeach and then across the fields between Milton and Waterbeach. The southern boundary from the Mere Way follows the course of the old St Ives railways line encompassing the Cambridge Science Park and the Regional College but not the "Milton" sewage works (which are inside the city boundary).

The parish has a population of approximately 4,300 with 3,200 being on the register of electors. Its office is attached the bowls pavilion in Coles Road. The Council normally meets in the Bowls Pavilion and the parish records are held by the parish clerk at the office.

There are fifteen councillors plus the clerk who is a paid employee of the Council.

The District Council for the area is South Cambridgeshire District Council (SCDC). Its offices are at Cambourne.

The County Council is Cambridgeshire County Council and its offices are at Shire Hall, Cambridge.

The Parish Council has little power but a reasonable amount of influence. A prime example of this is in planning applications. South Cambridgeshire District Council is the planning authority and sends details of every planning application within the parish to the Parish Council for review and will take into account the councillors' comments when coming to a decision.

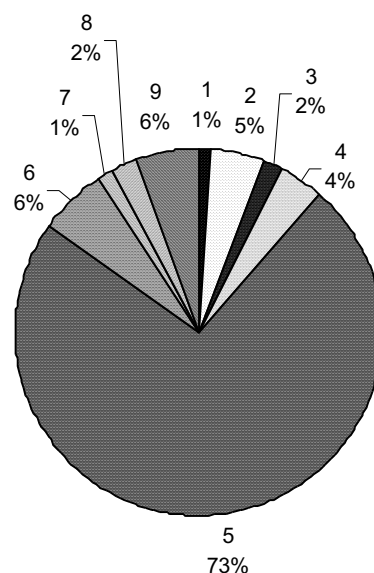
Similarly the Cambridgeshire County Council is the highway authority, but it consults the parish when it is considering any road scheme, for example the placing of double yellow lines, or the implementation of a cycle path.

The Parish Council is directly responsible for providing the following services to the village:

- advice on trees (through the tree warden)
- allotments
- bus shelters
- cemetery
- Christmas lights
- commenting on all planning applications
- cutting grass verges on behalf of the County Council.
- managing facilities for youth, including the youth club
- many small pieces of land around the village (mainly green spaces and shrub beds)
- minibuses and in conjunction with the Milton Charities the Dial-a-Ride Trolley Bus to take the elderly and disabled shopping.
- mobile warden - who helps elderly people in the village maintain their independence
- play areas throughout the village - including the provision, regular inspection and maintenance of play equipment
- providing and planting the daffodils which delight the village each spring
- street cleaning
- taking a lead in getting things done in the village, such as sheltered housing, or new sports facilities
- war memorial and leading the Two Minutes' Silence on Armistice Day
- In addition, the Sycamores and Coles Road recreation grounds and the community centre belong to the Parish Council, but these have been leased by the Council to the Milton Community Centre Charitable Trust who manage these facilities on behalf of the village.

Income 2005-06

- 1 Agency Received
- 2 Community Care
- 3 Allotment Rents / Cemetery Fees
- 4 Community Minibus/Trolley Bus Income
- 5 Precept
- 6 Interest
- 7 Insurance claim
- 8 Receipts - recycling
- 9 Youth Building Grant



How Do I Get in Touch with the Parish Council?

Your Local Councillors:

Parish Council - <http://www.miltonvillage.org.uk>

Your Parish Councillors:

Jane Coston	Chair of Parish Council	67 Coles Road	563539	chair@miltonvillage.org.uk
Paul Oldham	Vice Chair	4 Church Lane	861045	vice-chair@miltonvillage.org.uk
Phil Badley		10 Old School Lane	710086	phil.badley@ntlworld.com
Alex Campbell		10 Ballard Close	862184	alex.campbell@miltonvillage.org.uk
Rob Chapman		Rectory Farm	860374	rectoryfarm@fwi.co.uk
Ian Davis		13 Pearson Close	721063	idavis4@ntlworld.com
Roger Day		11 Pryor Close	862246	
Mark Ellwood		52 Fen Road	860770	markellwood06@aol.com
Rob Farrington		8 Pryor Close	860160	rob.farrington@btopenworld.com
Barry Jefferson		69 The Sycamores	862804	barry.jefferson@miltonvillage.org.uk
Ian May		34 Butcher Close	521294	ian.may@ntlworld.com
Jenny Payne		35 Butt Lane	563747	jenny.payne1@ntlworld.com
Hazel Smith		7 Hall End	860752	hazel.smith@miltonvillage.org.uk
Richard Summerfield		1 Willow Crescent	860715	richard@tsummerfield.freeserve.co.uk
Bob Waters		3 Lyndhurst Close	860620	robert.waters1@ntlworld.com

County Council

Responsible for: education, roads (except trunk roads such as the A14, which come under the Highways Agency, trading standards, libraries, social services, waste and recycling, rights of way, buses.

Your County Councillor:

Michael Williamson The Willows Long Drove Waterbeach Cambridge CB5 9LW

Tel & Fax: 860899 michael.williamson@cambridgeshire.gov.uk

District Council

Responsible for: planning applications, building control, refuse collection, street cleaning, council housing, country park, environmental health, council tax collection.

Your District Councillors:

Richard Summerfield 1 Willow Crescent 860715 richard@tsummerfield.freeserve.co.uk

Hazel Smith 7 Hall End 860752 hazel.smith@miltonvillage.org.uk

When Does the Council Meet?

The full council normally meets on the first Monday of every month at the Bowls Pavilion (except in August). The Planning Committee normally meets on the third Monday of every month, if there is any planning business to consider. Other committees meet throughout the year as necessary. Notice of all meetings is given on the Parish notice boards, located behind the war memorial and outside the office, and is also published on the village web site. The dates are also announced on the milton-news mailing list.

All meetings are open to the general public. You have no right to speak, but the chair may, at their discretion, let you address the Council if the matter being discussed is of particular interest to you.

Minutes of past meetings can be found on the Parish notice board, or on the web site.

Finding the Office

The Parish Council office is in the car park of the Community Centre on Coles Road. There is cycle parking outside the door and the car park is free.

Jim Daniels Clerk to Milton Parish Council

Parish Council Office, Coles Road, Milton, Cambridge CB24 6BL

Email: clerk@miltonvillage.org.uk

Tel: 01223 861447

Fax: 0871 433 9275 (Calls cost 10p/minute)